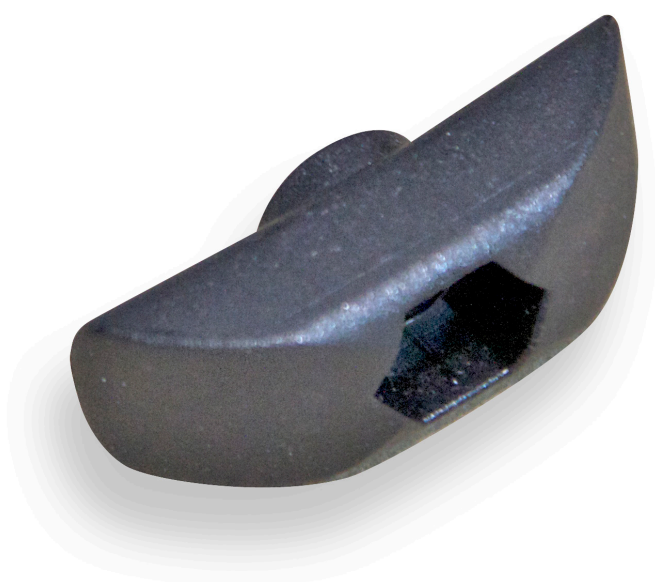




# Newton One Handrim Mount Insert to facilitate handrim adjustments



Handrim Nut Insert Rim Rim tape

The new plastic insert allows you to replace, remove or adjust the handrim without having to remove the tire to access the nut.



The plastic insert remains in the rim, under the rim-tape and holds the nut in place. Simply remove the bolt from the outside of the handrim to remove, replace or adjust the handrim.

**NOTE: Pneumatic tires must remain inflated to hold the insert in place when replacing.**



Compatibility :

- 
- 
- 
- 
- 

Codes :

21500 Plastic handrim insert - Kit of 6