



MARCH 2017

Improvement - Caster housing anti-flutter 3.3

INTRODUCING THE WORLD'S FIRST ANTI-FLUTTER CASTER HOUSING.

Wheel flutter is both annoying and inefficient. That's why we came up with the world's first anti-flutter system. The revolutionary Motion Composites Anti-Flutter Caster Housing not only lets you minimize flutter with a simple twist of a screw, it's also engineered to be 25% lighter while still delivering greater durability.

The unique cowling gives our system a sleeker appearance while protecting the mechanism from dust and moisture infiltration. As a result, your Motion Composites Anti-Flutter Caster Housing provides added years of reliable performance.

- **Convenient single-screw adjustment minimizes flutter.**
- **25% lighter for improved handling and efficiency.**
- **Unique bearing system. Contributes to reduced flutter and lasts longer than conventional bearing systems.**
- **Sleek cowl protects from the elements, increases service life.**
- **The set screw is used to add friction on the stem bolt to avoid caster flutter.**
- **With every new wheelchair, the set screw comes preset from the factory.**
- **Will be applied for all new wheelchairs.**
- **If for a certain use you encounter caster flutter you can simply tighten (clockwise) the set screw (1.5 mm drive) and eliminate any and all caster flutter.**



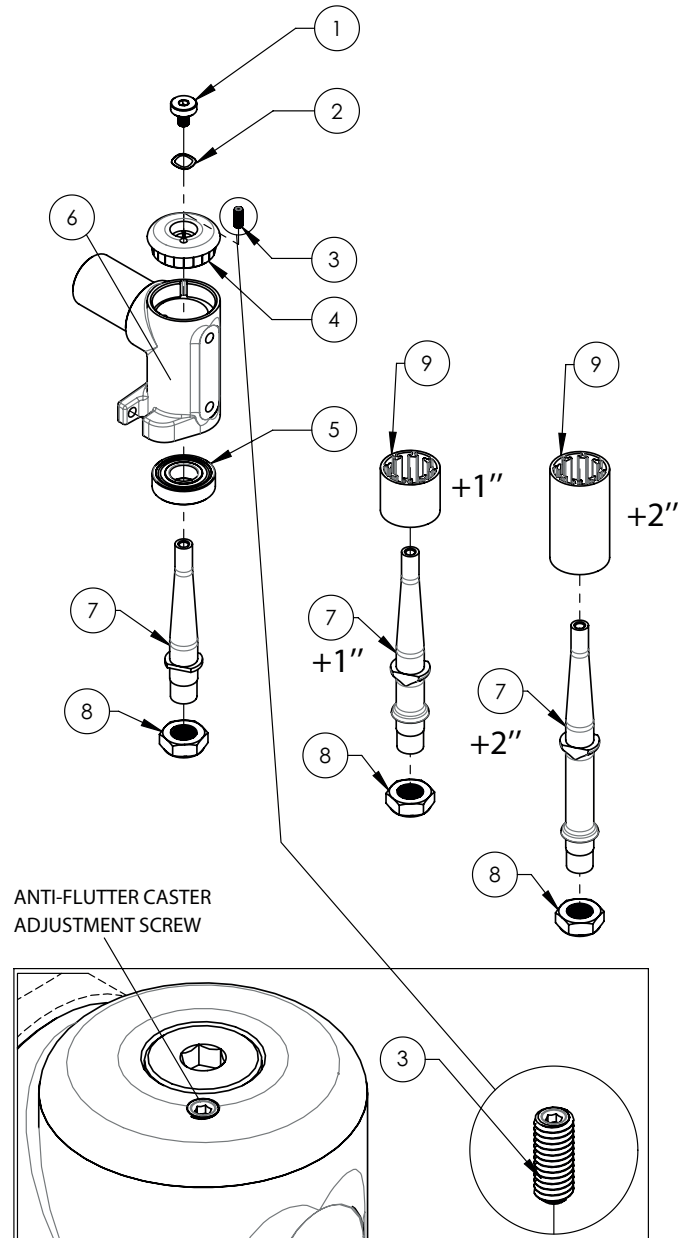
Removing/Installing the stem bolt assembly

To remove the stem bolt:

- Remove screw (1) and washer (2) while holding the fork.
- Remove caster, fork and stem bolt assembly.
- Remove the dust protector (9).
- The caster wheel may need to be removed to take out stem bolt (7).
- Remove locknut (8) while holding the stem bolt (7) by the flat spot using a wrench.
- Remove the fork and perform maintenance if necessary.

To install the stem bolt:

- Refer to the diagram to make sure all hardware is installed in the right order.
- Insert the stem bolt (7) into the fork (not showing) and tighten the locknut (8) while holding the stem bolt (7) by the flat spot using a wrench.
- Slide the dust protector (9) onto the stem bolt (7)
- Insert caster, fork and stem bolt assembly through the caster housing (6)
- Tighten the screw (1) and washer (2) while holding the fork (not showing) from the bottom to prevent the fork from turning.
- Adjust the friction of the stem bolt by turning the set screw (3).
- The set screw is used to add friction on the stem bolt to reduce caster flutter.
- Avoid overtighten the screw. Overtighten will cause damage to the anti-flutter system.



7	22031	STD	Stem Bolt
7	22032	+1"	Stem Bolt
7	22033	+2"	Stem Bolt
9	22149	+1"	Plastic Cover
9	22150	+2"	Plastic Cover