



# TECHNICAL GUIDE

## TORQUE SPECS TABLE

### 1. GENERAL SPECIFICATION

- Acceptable tolerances for torques is around  $\pm 7\%$ ;
- Use of a calibrated torque wrench as per manufacturer requirements is mandatory;
- When multiples bolts are torqued, alternate one side to the other (torque sequence) to ensure a proper final torque;
- The table below specifies the recommended dry torque. Lubrification should not be use unless specified.

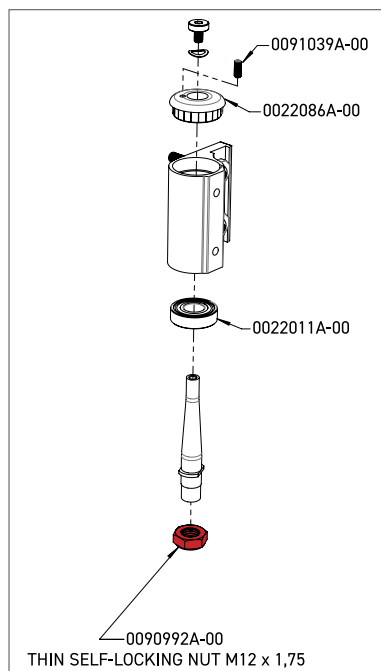
### 2. GENERAL GUIDELINES\*

ALLEN KEY SIZES	TORQUE
3 mm	4 Nm
4 mm	7 Nm
5 mm	12 Nm

### 3. SPECIFIC TORQUE REQUIREMENTS

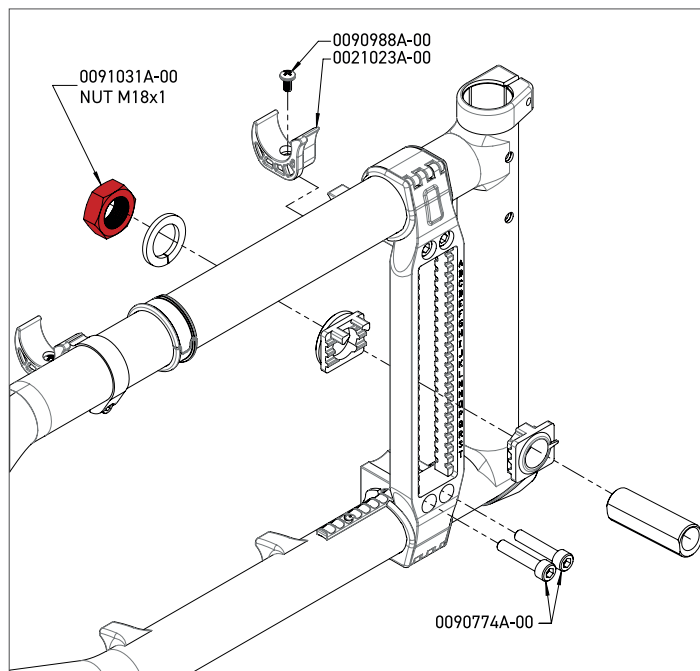
#### FORK NYLON NUT (#0091039A-00)

Torque: 29,3 Nm



#### REAR MOUNTING PLATE NUT (#0091031A-00)

Torque: 61 Nm



\* General guidelines apply to all hardware, except the one with specific requirements.

\*\* Note that in some cases, applied torque can vary in time du to creeping.