



ASSEMBLY INSTRUCTIONS

TENSION ADJUSTABLE BACKREST



INSTALL THE STRAPS

STEP 1 AFTER CONNECTING THE TUBULAR BACKREST FRAME, YOU CAN INSTALL THE ADJUSTABLE TENSION BACKREST.





ASSEMBLY INSTRUCTIONS TENSION ADJUSTABLE BACKREST

STEP 2 FOR THIS STEP, FOUR (4) STRAPS ARE REQUIRED.



STEP 3 HOLD THE FIRST STRAP ENSURING THAT THE VELCRO SIDE IS FACING OUT. INSERT THE STRAP INTO THE D-RING, AS SHOWN BELOW.



STEP 4 THE STRAP SHOULD LOOK LIKE THE BELOW IMAGE. REPEAT THIS PROCESS WITH THE THREE (3) OTHER STRAPS.





ASSEMBLY INSTRUCTIONS TENSION ADJUSTABLE BACKREST

STEP 5 INSERT THE FOUR (4) STRAPS ONTO THE LEFT TUBULAR BACKREST FRAME ENSURING THAT THE VELCRO IS FACING YOU.



ONCE THE FOUR (4) STRAPS ARE INSTALLED, YOU SHOULD HAVE THE FOLLOWING RESULT.



STEP 6 ADJUST THE STRAP WITH LARGE ENDS TO THE PROPER LENGTH TO FIT THE TOP OF THE TUBULAR BACKREST FRAME.





ASSEMBLY INSTRUCTIONS TENSION ADJUSTABLE BACKREST

- STEP 7** SLIDE THE LEFT END ONTO THE TOP OF TUBULAR BACKREST FRAME, ENSURING THAT THE D-RINGS ARE FACING UP. REPEAT THIS STEP FOR THE RIGHT SIDE



- STEP 8** AT THIS POINT, ALL FOUR (4) STRAPS SHOULD BE INSTALLED ON THE LEFT TUBULAR BACKREST FRAME AS WELL AS THE LARGE END STRAP, AS SHOWN IN THE BELOW IMAGE.





INSTALL THE PUSH HANDLES

STEP 1 REMOVE THE TOP SCREWS ON THE PUSH HANDLES.



STEP 2 SLIDE THE STRAP WITH LARGE ENDS UP SO THAT YOU CAN SCREW THE PUSH HANDLE TO THE STRAP. REPEAT THIS STEP FOR THE OTHER SIDE.





INSTALL THE BACKREST COVER



STEP 1 LIFT THE FLAP AS SHOWN IN THE BELOW IMAGE. YOU WILL NOTICE THAT THERE IS VELCRO ON BOTH SIDES OF THE UPPER SECTION.



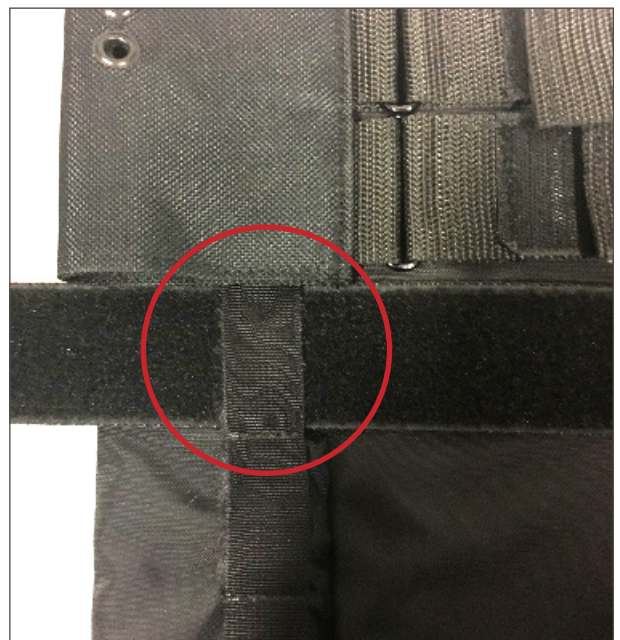


ASSEMBLY INSTRUCTIONS TENSION ADJUSTABLE BACKREST

- STEP 2** INSTALL THE BACKREST ENSURING THAT THE VELCRO AREA IS EVEN WITH THE VELCRO FASTENED TO THE TUBULAR FRAME, AS SHOWN IN THE BELOW IMAGE.



- STEP 3** INSERT THE FOUR (4) STRAPS INTO THE LOOPS ON THE COVER.



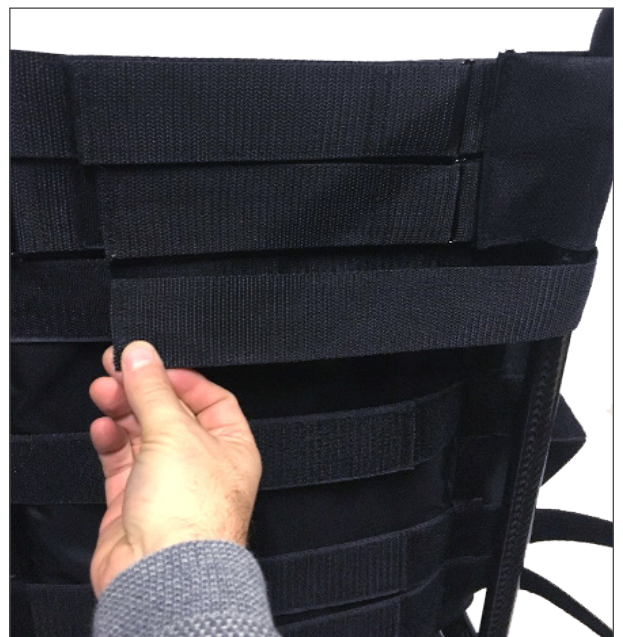


ASSEMBLY INSTRUCTIONS TENSION ADJUSTABLE BACKREST

THEY MUST BE INSTALLED EXACTLY AS SHOWN BELOW.



STEP 4 TIGHTEN THE STRAPS.





ASSEMBLY INSTRUCTIONS TENSION ADJUSTABLE BACKREST

STEP 5 ALL THAT IS LEFT TO DO IS TO FOLD THE PANEL BACK.

