



INSTRUCTION SHEET

PRATIKO ANTI-ROLLBACK SYSTEM INSTALLATION



- Before beginning assembly, make sure you have all the necessary parts. These parts must be ordered through your representative or through the Moton Composites customer service. Make sure to have the serial number of your wheelchair to make ordering easier.

Material(s) required:

- 0006946A-00 PRATIKO ANTI-ROLLBACK SYSTEM 22po
- 0006947A-00 PRATIKO ANTI-ROLLBACK SYSTEM 24po

Tool(s) required:

- Square screwdriver
- Ratchet
- 10-11-13-24-26mm bits
- Hammer
- 61 Nm or 45 Lbs/Pi adjusted torque wrench

INSTALLATION

1. Remove the rear wheels.



2. Install the metal disk putting the convex side up.



3. For plastic wheels, use the screws supplied by PratiKo. Use 0099564A-00 washers and assemble disks as shown further in this document.



4. Orient the "L" so that it points towards the top of the tire.



5. Insert tab between compression plate and "L" shape bracket.



6. Secure the disc by placing it on the "L" shaped brackets and use the screw provided for this purpose, which comes with the Pratiiko system.



HELIO C2 ET HELIO A7

1. Remove axle and reinstall it upside down at the same place.
2. Add the 2 spacers on mounting plate, one on the front and one on the back.
3. Put stabilizing nut in place.





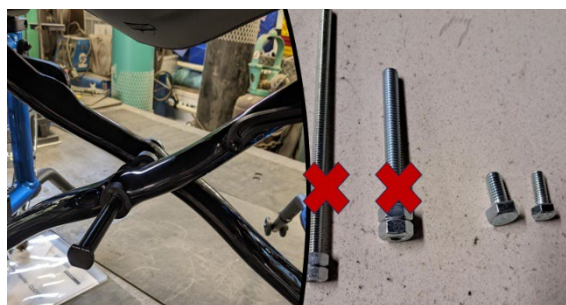
INSTRUCTION SHEET PRATIKO ANTI-ROLLBACK SYSTEM INSTALLATION

HELIO A6 ET MOVE

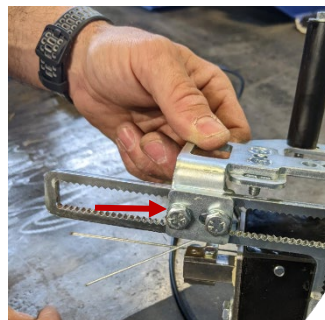
1. Remove axle and reinstall it upside down at the same place.
2. Add spacer on top of mounting plate.
3. Put stabilizing nut in place.



8. *For hydroformed X-Braces, pull X-Brace screw out to reverse it.
*For square X-Braces, you only need to unscrew it.
DO NOT USE the PratiKo supplied screws.



9. Remove the 2 screws and install holding plate on the X-Brace.



10.

For square
X-Braces.

For
hydroformed
X-Braces.



11. Installing the stabilizer:



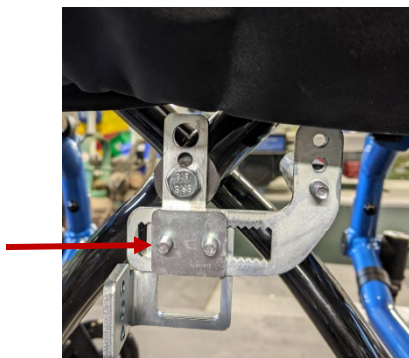
12. There are 3 levels of adjustment for the stabilizer.



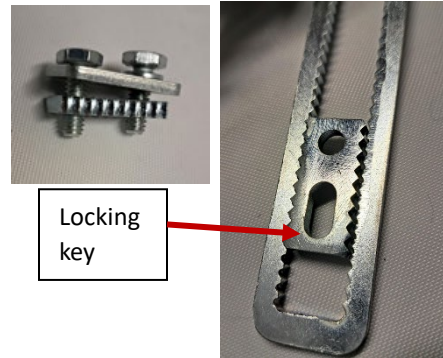
13. The rubber stabilizer must be adjusted to fit between the 2 X-Braces pieces which will allow the housing to be parallel to the ground.



14. The wheelchair must open properly. It is possible to move this mechanism from left to right to get the right fit.



15. Install the mechanism to adjust the height of the seat with the locking key and the 2 screws provided.



16. Install the trigger flush with the back of the seat sling. In neutral position it should raise the seat sling slightly.



17. There are 2 lengths of cables with the pin boxes. The longer one will be on the left wheel and the shorter one on the right wheel.

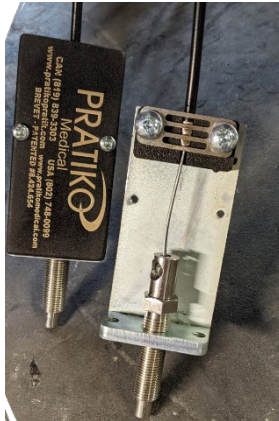




INSTRUCTION SHEET

PRATIKO ANTI-ROLLBACK SYSTEM INSTALLATION

18. Open the trigger boxes and adjust the pins length to install them on the holding plates.



21. Adjust locking pin so it sticks out of the plate by 1/8". It is important to ensure that the pin doesn't come in conflict with wheel spokes.



19. Torque the axles to 61 Nm or 45 Lbs/ft.



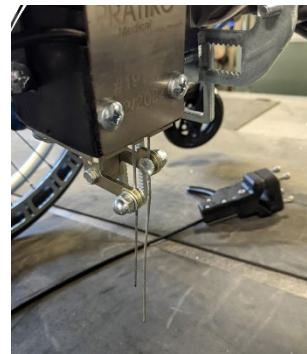
22. After adjusting the locking pins, reinstall the boxes in place.



20. To adjust the locking pins sticking out of the boxes, unscrew the 2 nuts holding the retaining cables.



23. Ensure a tight adjustment of the cable holding nuts so they don't go loose over time.





INSTRUCTION SHEET

PRATIKO ANTI-ROLLBACK SYSTEM INSTALLATION

24. Ensure proper function of wheel locks after installation.



25. Fix the lever on a handle of the wheelchair. The customer can install it as he wish when receiving their wheelchair.



26. After completing installation, it's important to test the system so it locks the wheels when the user is not sat and the wheels can roll properly when the user is sat. Also ensure the manual trigger works properly.