



INSTRUCTION SHEET

STEM BOLT ASSEMBLY (HELIO A6-A7-C2-MOVE)



- Before beginning assembly, make sure you have all the necessary parts. These parts must be ordered through your representative or through the Moton Composites customer service. Make sure to have the serial number of your wheelchair to make ordering easier.

Material(s) required:

- 0022172A-00 FROG LEGS PHASE-TWO FORK
- 0022153A-00 SAAF STEM BOLT STD
- 0022149A-00 STEM BOLT COVER + 1in
- 0022150A-00 STEM BOLT COVER + 2in
- 0022154A-00 SAAF STEM BOLT + 1
- 0022155A-00 SAAF STEM BOLT + 2

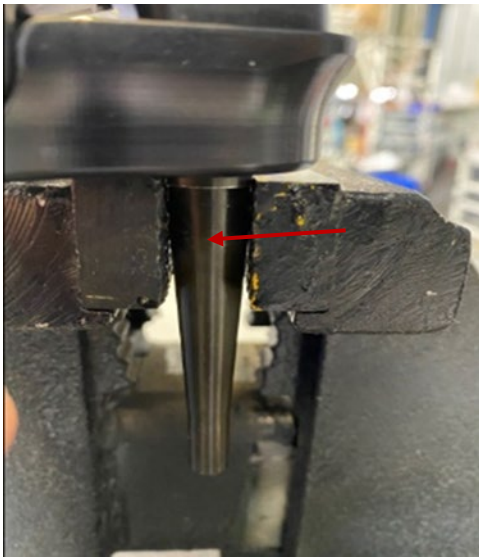
Tool(s) required:

- Torque wrench adjusted to 27 Nm
- Medium strength liquid threadlocker (blue)
- 1 ½" wrench



ASSEMBLY

1. Install the stem bolt in the vice as follows:



2. Put 1 drop of blue threadlocker to the tip of the stem bolt and screw on the caster housing.





INSTRUCTION SHEET

STEM BOLT ASSEMBLY (HELIO A6-A7-C2-MOVE)

3. Finalize the assembly with the torque wrench adjusted to 27 Nm and the 1 ½" wrench.

