





INSTRUCTION SHEET

**ARMREST INSTALLATION WITH THE 3 PIECES RECEIVER (HELIO A7 - HELIO C2 – VELOCE - APEX)**

-  • For the APEX A et APEX C wheelchairs, the “U” armrests are not available.
-  • The installation is the same for folding and rigid wheelchairs.
- Most of the installation steps are the same for the “T” and “U” armrests.
- Before the beginning of the installation, make sure to have all needed pieces. The pieces must be ordered by your representative or by the customer service from Motion Composites. Have your serial number on hand to facilitate the order.

**Material(s) required:** **Tool(s) required:**

- 2 X V3 armrest receiver(#0004111A-00)
- 1 X armrest - T & U type, right - 8-12 po (#9001299B\_9001300B) **OR**
- 1 X armrest - T & U type, right - 10-14 po (9001301B\_9001302B)
- 1 X armrest - T & U, left - 8-12 po (#9001303B\_9001304B) **OR**
- 1 X armrest - T & U type, left - 10-14 po (#9001305B\_9001306B)
- 1 X armrest pad std, right (#9010394B\_9010397B)
- 1 X armrest pad std, left (#9010398B\_9010401B)
- 1 X rear pivot, right (#9001313A-00)
- 1 X rear pivot, left (#9001314A-00)

- Measuring tape
- 2 mm Allen key
- 4 mm Allen key
- 7 Nm adjusted torque wrench

**RECEIVER INSTALLATION**

**0004111A-00  
V3 ARMREST RECEIVER**

ITEM NO	PARTNO	DESCRIPTION	QTY
1	0007694A-00	V3 ARMREST RECEIVER BASE	1
2	0003173A-00	V3 ARMREST CLAMP, HINGE	2
3	0003112A-00	V2 ARMREST U CLAMP SLEEVE	2
4	0090748A-00	SOCKET CAP SCREW M5x0.8x18mm L	2



## INSTRUCTION SHEET

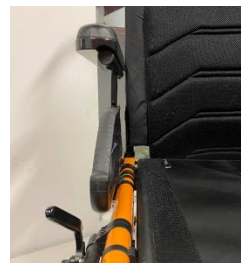
# ARMREST INSTALLATION WITH THE 3 PIECES RECEIVER (HELIO A7 - HELIO C2 – VELOCE - APEX)

5. \* For the "T" armrest, position the receiver at 6 inches from the corner between the seat and the backrest.



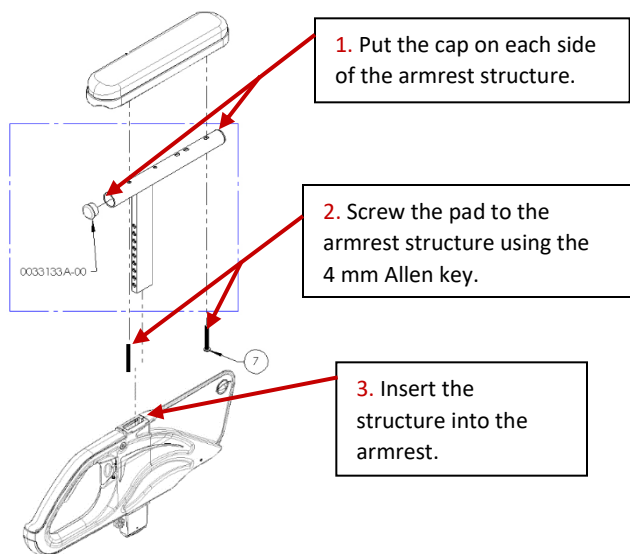
\* For the « U » armrest, lower the armrest and position receiver so that the armrest can fit in.

6. By adjusting the tension of the 4 mm screws with the Allen key, ensure that the armrest is parallel to the backrest.

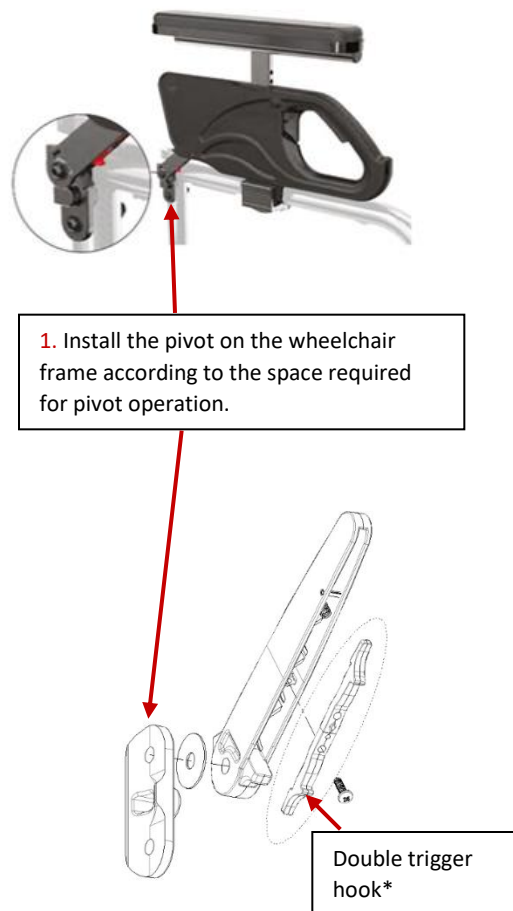


7. Finalize the installation with the torque wrench adjusted to 7 Nm.

## ARMREST PAD INSTALLATION



## « U » ARMREST PIVOT INSTALLATION





## INSTRUCTION SHEET

# ARMREST INSTALLATION WITH THE 3 PIECES RECEIVER (HELIO A7 - HELIO C2 – VELOCE - APEX)

\* The double trigger hook can be installed in 2 different ways:  
standard release and lock position.

