



INSTRUCTIONS SHEET

ORIENTATION TIRE CHANGE WITH AN ONE ARM DRIVE

COMPATIBLE WITH A6-A7-C2-MOVE-VELOCE WHEELCHAIRS

Material(s) required:

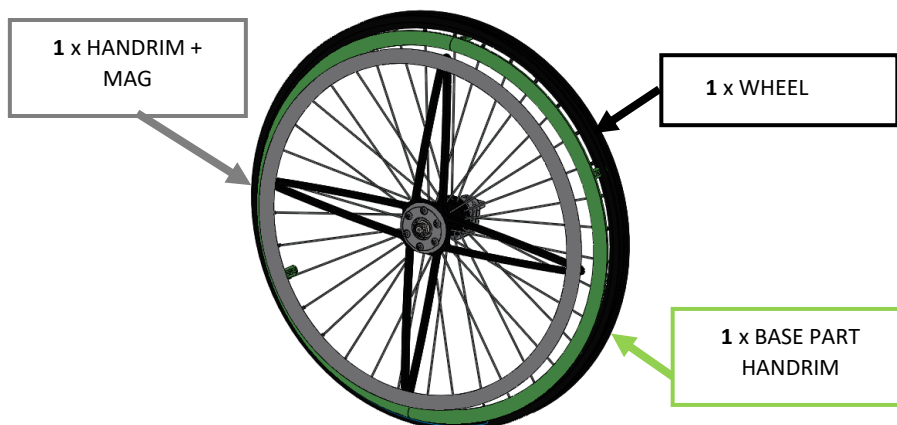
- One arm drive

Tool(s) required:

- $\frac{3}{4}$ Ratchet
- $\frac{3}{4}$ Wrench
- Adjustable wrench

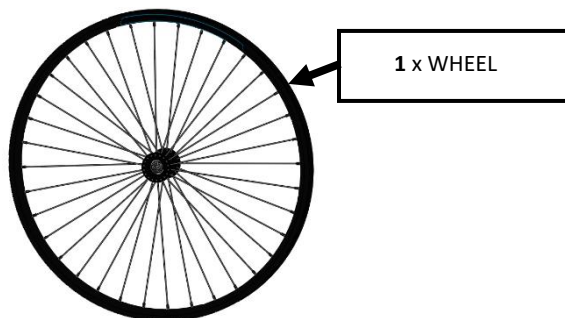
• *DRIVE WHEEL COMPONENT :

The drive wheel is the wheel with which the user will control his wheelchair.



• **DRIVEN WHEEL COMPONENT:

The driven wheel is the wheel driven by the driving wheel.



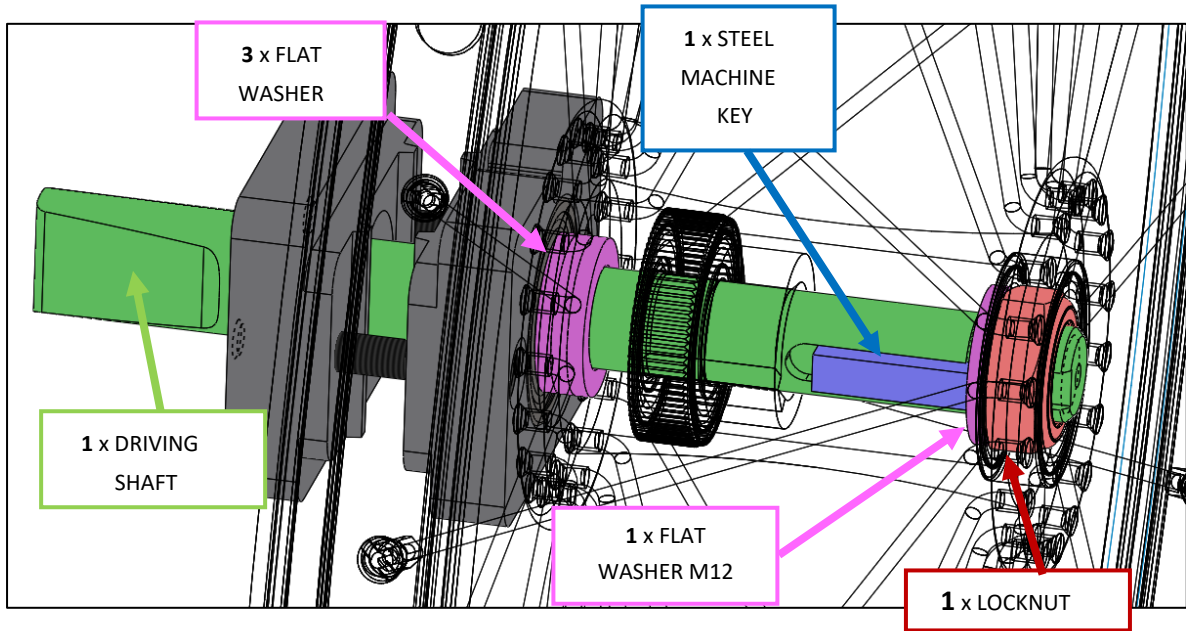


INSTRUCTIONS SHEET

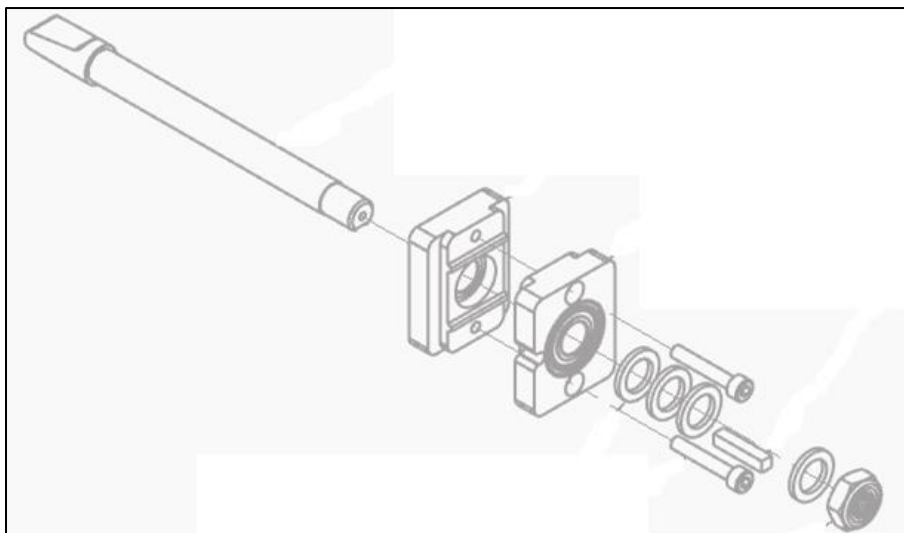
ORIENTATION TIRE CHANGE WITH AN ONE ARM DRIVE

- HARDWARE ASSEMBLY :**

Detailed view :



Exploded view :





INSTRUCTIONS SHEET

ORIENTATION TIRE CHANGE WITH AN ONE ARM DRIVE

- **BEFORE STARTING:**

Before carrying out the disassembly, **check what type of tire is installed on the rims:**



UNIDIRECTIONAL
TREAD



BIDIRECTIONAL
TREAD

If a BIDIRECTIONAL TREAD type is installed on the rim, **DON'T** considering the operation "**Reverse the direction of the tire (#5)**".

If a UNIDIRECTIONAL TREAD type is installed on the rim, the operation "**Reverse the direction of the tire" (#5)** should be considered.



INSTRUCTIONS SHEET

ORIENTATION TIRE CHANGE WITH AN ONE ARM DRIVE

Note: Before starting, make sur you have **removed the extensible transmission shaft** between the two wheels.

1. **Remove the drive wheel*:**
Remove the **driving shaft** from the wheel hub by using the adjustable wrench and ¾ wrench.



2. **Removed [the steel machine key](#):**
Remove **the steel machine key** from the wheel hub. In case of difficulties, use a screwdriver and a hammer to dislodge it. **BE CAREFUL TO NOT DAMAGE THE STEEL MACHINE KEY.**



3. **Remove [the driven wheel**:](#)**
Remove the **driving shaft** from the wheel hub by using the adjustable wrench and ¾ wrench.



4. **Removed [the steel machine key](#):**
Remove **the steel machine key** from the wheel hub. In case of difficulties, use a screwdriver and a hammer to dislodge it. **BE CAREFUL TO NOT DAMAGE THE STEEL KEY AND THE PARTS IN WICH IT FITS**

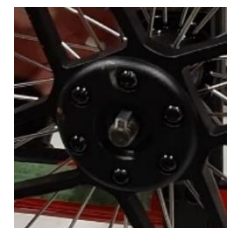


5. **[Change the direction of the unidirectional tread tire on the rim:](#)**
Deflate the tires in order to be able to unload them from the rims, and turn them over in order to modify the direction of the treads. Then inflate.

6. **Install [the drive wheel*:](#)**
Insert the **driving shaft** inside the wheel hub, the handrim and mounting plate. **BE SURE TO RESPECT THE HARDWARE ASSEMBLY OF THE WHEEL (Page 2).**



7. **Install [the steel machine key](#):**
Align grooves included in **the driving shaft** and the wheel hub. Insert **the steel machine key**. In case of difficulties, use a screwdriver and a hammer to lodge it. **BE CAREFUL TO NOT DAMAGE THE STEEL KEY.**





INSTRUCTIONS SHEET

ORIENTATION TIRE CHANGE WITH AN ONE ARM DRIVE

8. Install **the driven wheel****:

Insert **the driving shaft** inside the wheel hub and mounting plate. **BE SURE TO RESPECT THE HARDWARE ASSEMBLY OF THE WHEEL (Page 2)**.

9. Install **the steel machine key**:

Align grooves included in the **driving shaft** and the wheel hub. Insert the steel machine key. In case of difficulties, use a screwdriver and a hammer to lodge it. **BE CAREFUL TO NOT DAMAGE THE STEEL KEY AND PARTS IN WHICH IT FITS.**



**See page 1 for definition.*

***See page 1 for definition.*