

INSTRUCTION SHEET

SWING AWAY ANTI-TIPPER

- i** • Motion Composites highly recommends using anti-tippers.
- Before the beginning of the installation, make sure to have all needed pieces. The pieces must be ordered by your representative or by the customer service from Motion Composites. Have your serial number on hand to facilitate the order.

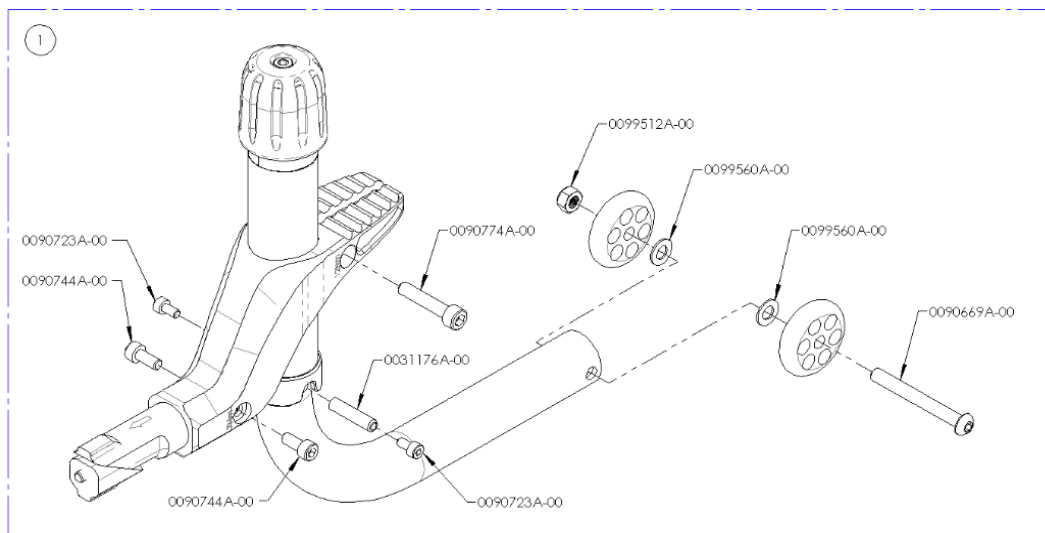
COMPATIBLE WITH VELOCE, HELIO C2, HELIO A7, HELIO A6 ET MOVE WHEELCHAIRS

Material(s) required :

- Swing away anti-tipper system (# 9007930A-00)

Tool(s) required :

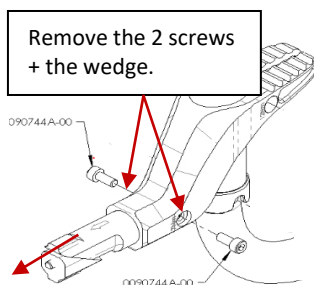
- 4 mm Allen key
- 5 mm Allen key
- 7 Nm and 12 Nm adjusted torque wrench



INSTALLATION

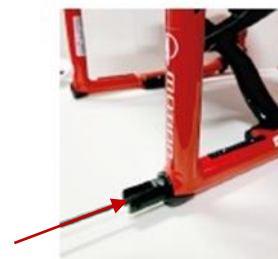
1. If ordered on chair, the wedge will already be installed on the rear of the wheelchair frame. If so, proceed to step 3.

If not, remove the screws on each side of the Z-bracket. Use the 4 mm Allen Key. Then, remove the wedge.



2. While keeping the word "TOP" facing up and the flat surfaces perpendicular to the ground, insert the wedge as far as it will go into the rear of the wheelchair frame.

Tighten with the 7 Nm adjusted torque wrench.



3. Reattach the Z-bracket of the swing away anti-tipper to the installed wedge using the 2 screws of step #1.

Tighten with the 7 Nm adjusted torque wrench.



4. To calibrate the anti-tipper to the user, loosen the screw on the Z-bracket to make the height adjustment.

Then, tighten with the 12 Nm adjusted torque wrench. Anti-tipper tube should align with the frame tube.



Anti-tipper should be 1 ½" to 2" (3.8 cm to 5.1 cm) from the floor.

ADDITIONAL ASSISTANCE NEEDED TO ACHIEVE DESIRED HEIGHT?

1. First, carefully remove the screw at the top of the swing away anti-tipper. Watch for the spring under the cap and the bent tube that will be released.
2. Loosen the Z-bracket screw to slide the Z-bracket upwards off the outer tube.
3. Invert the Z support so that the "7Nm" text is towards the top and return it to the outer tube.
4. Replace the screw, with the spring in place under the cap. The cap must fit into the tube insert.
5. Do the steps 3 and 4 of the previous section.

