



INSTRUCTION SHEET

CASTER HOUSING INSTALLATION (HELIO A7 – HELIO C2)

- i** Before beginning assembly, make sure you have all the necessary parts. These parts must be ordered through your representative or through the Moton Composites customer service. Make sure to have the serial number of your wheelchair to make ordering easier.

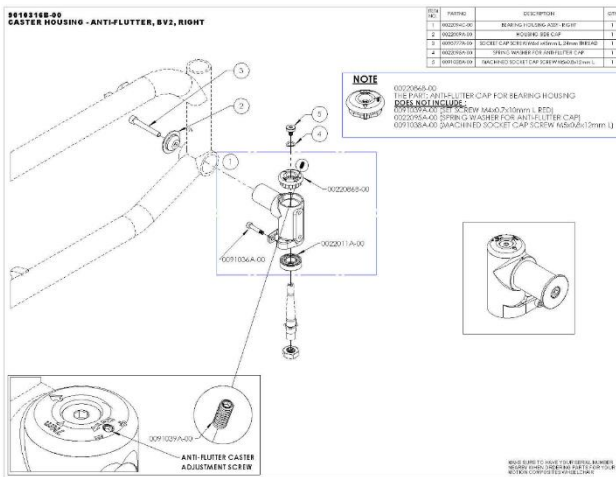
Material(s) required:

- Caster housing – anti-flutter, BV2, right (#9010316B-00) **OR/AND**
- Caster housing – anti-flutter, BV2, left (#9010317B-00)
- 2 X screws with WC-19 or ISO 7176-19 anchors(#906659) **OR** 2 X screws without WC-19 or ISO 7176-19 anchors (# 90655)

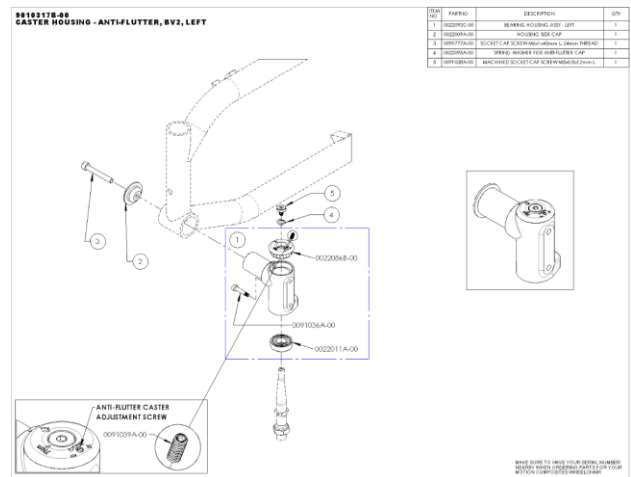
Tool(s) required: (for 1 wheel)

- 2mm Allen key
- 4 mm Allen key
- 5 mm Allen key
- Thread locker
- Adjusted torque wrench to 7 Nm **AND** 12 Nm

RIGHT CASTER HOUSING



LEFT CASTER HOUSING

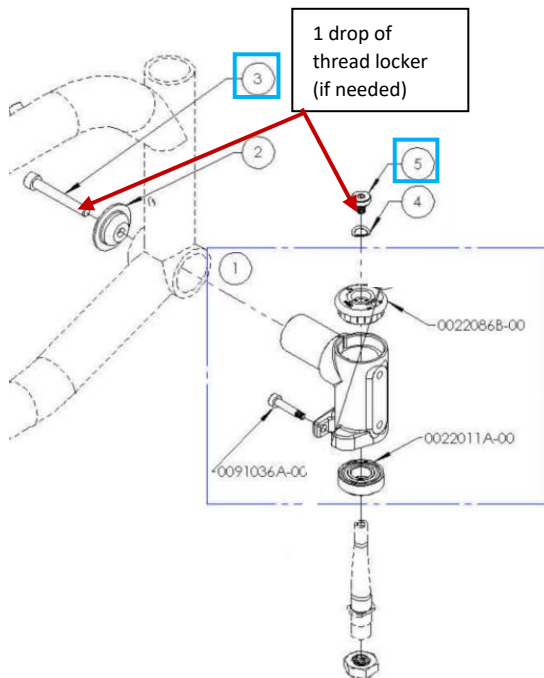




INSTRUCTION SHEET CASTER HOUSING INSTALLATION (HELIO A7 – HELIO C2)

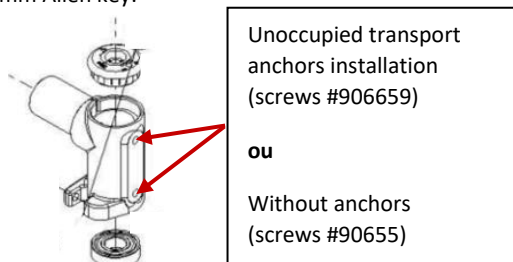
RIGHT CASTER HOUSING INSTALLATION

1. Make the following assembly by adding 1 drop of thread locker to the 2 places indicated **if there's none or if it's damaged**.



- For **screw #3**, use the 5 mm Allen key and finalize with the torque wrench adjusted to 12 Nm.
- For **screw #5**, use the 4 mm Allen key and finalize with the torque wrench adjusted to 7 Nm.

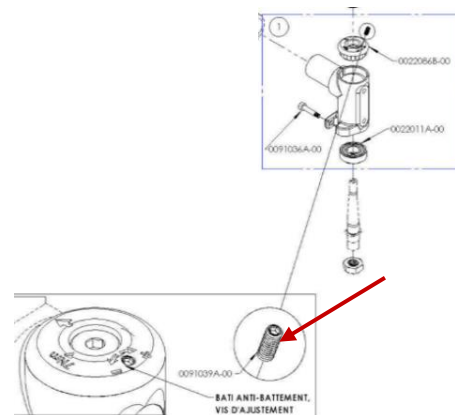
2. For the 2 remaining screw locations on the side of the wheel frame do the following installation with the 4 mm Allen key:



- If there's an anchor, finalize the installation with the torque wrench adjusted to 7 Nm.

3. To **adjust the anti-flutter** of the front wheel, tighten the set screw to the desired tension with the 2 mm Allen key.

- Tilt the wheelchair backwards, resting the push handles (or the backrest) on the ground.
- Slightly over-tension the adjustment screw and then loosen it to the required tension.



- The wheel should not have a rocking motion when you release it.
- You may need to make a small adjustment when using the wheelchair.

LEFT CASTER HOUSING INSTALLATION

1. Follow the same steps than the right caster housing.