



## INSTRUCTION SHEET

# REPLACE ECCENTRIC INSERTS ON MULTI-POSITION ANTI-FLUTTER CASTER HOUSING



This document describes how to **change** the **eccentric inserts** on **multi-position anti-flutter caster housing** (front wheel)



**Note:** To maintain the configuration of the wheelchair and avoid reinstalling the entire front wheel caster, it is important to **uninstall/install one screw at a time**.

Please, also refer to this document at [motioncomposites.com](http://motioncomposites.com) (Support and Education/ How-to documents):

- Squaring the Angle of the Font Wheels Caster Housings (MC-MTKG-WI-0008)

### Wheelchair models:

- HELIO A6
- MOVE
- CHRONOS
- COBALT 1/2
- PLATINE 1/2

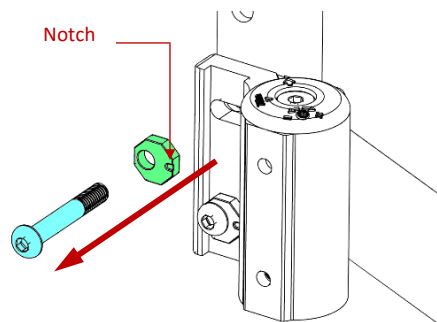
### Tool(s) required:

- Hexagonal key (Allen key) 4 mm or 5mm depending on production period
- Medium strength threadlocker (blue Loctite)

### CHANGE THE ECCENTRIC INSERTS

#### STEP 1:

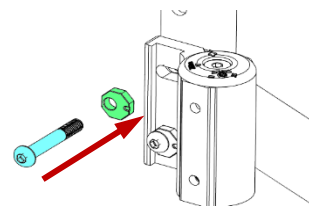
- **IMPORTANT:** Note the **position** of the **notch** on the **insert**
- Unscrew the **top screw** (4 mm or 5mm hexagonal key) from the front wheel caster. This step will allow you to remove the current eccentric insert (in green) from the front wheel caster



#### STEP 2:

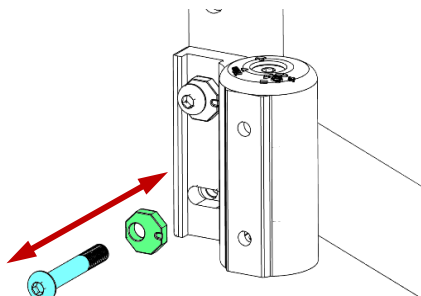
- Put **medium strength threadlocker** on the tip of the screw
- Insert the **new screw** and the **eccentric insert** into the front wheel caster and **tighten** it at **12 Nm**
  - **7 Nm for 40mm long\* screws**
  - **12 Nm for 35mm long \*screws**

\* Length is measured from the point at which the head sits flat with the surface, to the tip of the threads
- **IMPORTANT:** Be sure to place the **notch** on the **insert** at the **same position** as before disassembly, otherwise the initial configuration of the chair will be changed



#### STEP 3:

- Once the first screw is installed, **uninstall, and install** the **second screw** of the same caster by repeating steps 1 and 2



#### STEP 4:

- Repeat steps 1 to 3 to install the eccentric inserts on the **second wheel caster**

