

TECHNICAL GUIDE

TORQUE SPECS TABLE

1. GENERAL SPECIFICATION

- Acceptable tolerances for torques is around $\pm 7\%$;
- Use of a calibrated torque wrench as per manufacturer requirements is mandatory;
- When multiples bolts are torqued, alternate one side to the other (torque sequence) to ensure a proper final torque;
- The table below specifies the recommended dry torque. Lubrification should not be use unless specified.

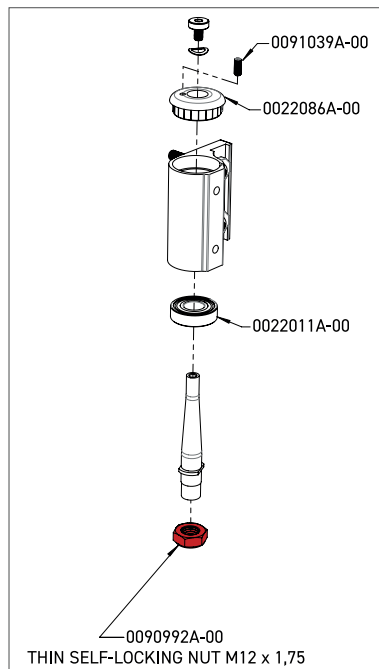
2. GENERAL GUIDELINES*

ALLEN KEY SIZES	TORQUE
3 mm	4 Nm
4 mm	7 Nm
5 mm	12 Nm

3. SPECIFIC TORQUE REQUIREMENTS

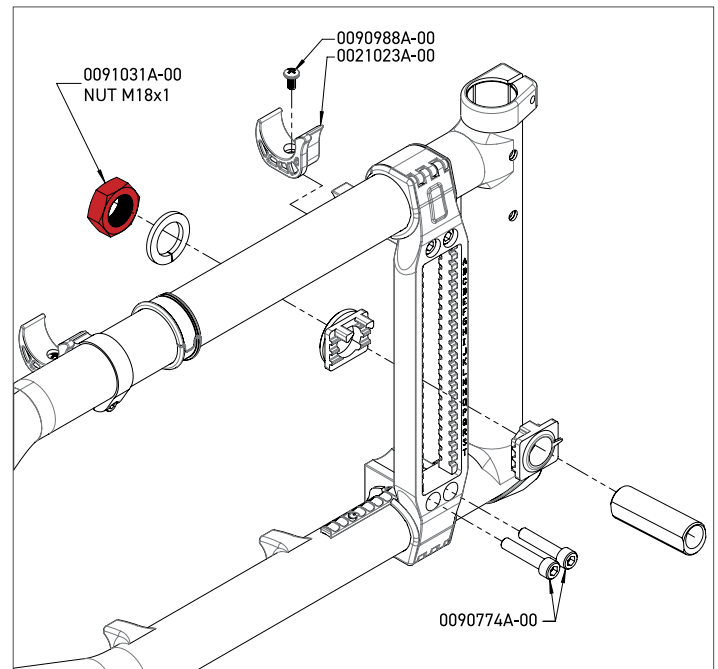
FORK NYLON NUT (#0090992A-00)

Torque: 29,3 Nm



REAR MOUNTING PLATE NUT (#0091031A-00)

Torque: 61 Nm



* General guidelines apply to all hardware, except the one with specific requirements.

** Note that in some cases, applied torque can vary in time du to creeping.