



INFORMATION SHEET

REAR WHEEL CAMBER PARTS AND HARDWARE FOR FOLDING AND RIGID WHEELCHAIR



This document describes the parts and hardware required for all camber angles on:

- Folding wheelchairs using multi-position rear wheels mounting plates
- Folding wheelchairs using 6 positions non-reversible mounting plates
- Folding wheelchairs using 12 positions reversible mounting plates
- Rigid wheelchairs using different angled axle bushing

If you have a **wheelchair manufactured before January 16, 2017**, you may see **different part numbers** in your wheelchair documentation.

- In this case, you may have to order a replacement kit.
- Motion Composites Customer Experience team will be glad to help you find the appropriate replacement parts.

For details, refer to the **Parts Manual** of your wheelchair model. Parts manuals are available online:

- Go to motioncomposites.com
- Choose the language setting according to your location (upper right corner): USA, Canada or international
- Click on “Tools and Forms” (upper right corner)
- Click on “View the parts manual” in the middle of the page
- Click on the model of your wheelchair to open a PDF of the Parts Manual.

Direct links to Parts Manuals:

- USA (English): https://www.motioncomposites.com/en_us/support-and-education/for-professionals/tools-and-forms/parts-manuals-usa
- Canada (English): https://www.motioncomposites.com/en_ca/parts-manuals
- International (English): https://www.motioncomposites.com/en_intl/parts-manuals

Please, also refer to the other documents of the series available at motioncomposites.com (Support and Education/How-to documents):

- Camber, rear wheel parallelism, toe-in, toe-out, and how to verify alignment (MC-MTKG-WI-0001)
- Perform rear wheel alignment on Motion Composites folding wheelchairs (MC-MTKG-WI-0002)
- Perform rear wheel alignment on Motion Composites rigid wheelchairs (MC-MTKG-WI-0003)
- **Rear wheel camber parts and hardware for folding and rigid wheelchairs (MC-MTKG-INF-0001) (this document)**
- Changing camber angle on folding wheelchairs (MC-MTKG-WI-0004)
- Changing camber angle on rigid wheelchairs (MC-MTKG-WI-0005)

Wheelchair models:

Tool(s) required:

- HELIO A6/A7/C2/XC2/Kids/K
- VELOCE
- MOVE
- PLATINE 1/2
- CHRONOS
- COBALT 1/2
- APEX A/C/P

- None



INFORMATION SHEET

REAR WHEEL CAMBER PARTS AND HARDWARE FOR FOLDING AND RIGID WHEELCHAIR

MULTI-POSITION REAR WHEELS MOUNTING PLATES

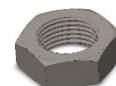
- Apply to **folding wheelchair** models: **HELIO A7/C2/XC2/Kids /K - PLATINE 1/2 - VELOCE**
- This mounting system can have **0°, 3° or 6° camber angle**.
 - To get a 0° camber angle we use an axle bushing with a straight hole (0°) and a straight (0°) nut and face plate assembly.
 - To get a 3° camber angle we use an axle bushing with a 3° machined hole and a straight nut (0°) and face plate assembly.
 - To get a 6° camber angle we use an axle bushing with 3° machined hole and a nut and face plate assembly machined with 3° holes. The combination of 3° angles on both parts results in a 6° camber angle.
- You can rapidly differentiate the two types of axle bushings by their color (0° is silver and 3° is black) and the two types of nut and face plate assembly by their number of arrows and notches.
- Common parts and hardware for **0°, 3° and 6° camber**



Multi-Position Mounting Plate
Part #: **0021511**



Lock washer
Part #: **0099597**



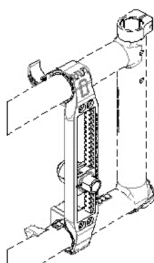
Nut
Part #: **0091031**

- Hardware required for **0° camber**

Mounting plate and axle **assembly** (0°)

Part #: **9001745**

The kit includes mounting plate assembly, nut, face plate assembly, axle bushing, and lock washer.



Axle bushing (**silver**) with a straight hole (0° angle)

Part #: **0021041**

Front view

Side view



Positioning nut and face plate assembly (0°)

Part #: **0021514**



Square part:
2 arrows



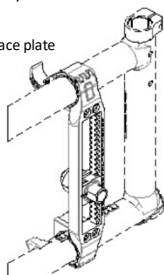
Round part:
2 notches

- Hardware required for **3° camber**

Mounting plate and axle **assembly** (3°)

Part #: **9001746**

The kit includes mounting plate assembly, nut, face plate assembly, axle bushing, and lock washer.



Axle bushing (**black**) with an angled hole of 3°

Part #: **0021042**

Front view

Side view



Positioning nut and face plate assembly (0°)

Part #: **0021514**



Square part:
2 arrows



Round part:
2 notches



INFORMATION SHEET

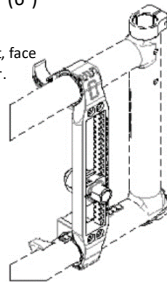
REAR WHEEL CAMBER PARTS AND HARDWARE FOR FOLDING AND RIGID WHEELCHAIR

- Hardware required for **6° camber**
 - To get a **6° camber** we use a **3° angled axle bushing** combined with a **3° angled face plate**.

Mounting plate and axle **assembly** (6°)

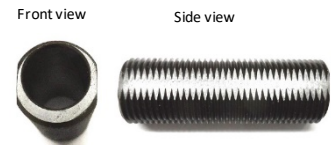
Part #: **9001747**

The kit includes mounting plate assembly, nut, face plate assembly, axle bushing, and lock washer.



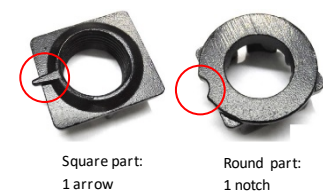
Axle bushing (**black**) with an angled hole of 3°

Part #: **0021042**



Positioning nut and face plate assembly (3°)

Part #: **0021513**



Square part:
1 arrow

Round part:
1 notch

6 POSITIONS NON-REVERSIBLE AND 12 POSITIONS REVERSIBLE REAR WHEEL MOUNTING PLATES

Apply to **folded wheelchair** models: **MOVE** and **CHRONOS**

- Those models use a **6 positions non-reversible** rear wheel mounting plates

Apply to **folded wheelchair** models: **HELIO A6 - COBALT 1/2**

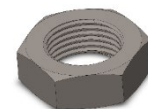
- Those models use a **12 positions reversible** rear wheel mounting plates
- Those mounting systems can have **0° or 3° camber angle**. **6° camber angle is not available**.
 - To get a 0° camber angle we use an axle bushing with a straight hole (0°).
 - To get a 3° camber angle we use an axle bushing with a 3° machined hole - Not available for those models: MOVE, CHRONOS et COBALT 1/2
- You can rapidly differentiate the two types of axle bushings by their color: 0° is silver and 3° is black.
- Common parts and hardware for **0° and 3°**



12 positions reversible
mounting plate
Part #: **0021049**



Lock washer
Part #: **0099597**



2 X Nut
Part #: **0091031**



6 positions non-reversible
mounting plate
Part #: **0021028**



INFORMATION SHEET

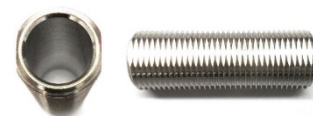
REAR WHEEL CAMBER PARTS AND HARDWARE FOR FOLDING AND RIGID WHEELCHAIR

• Hardware required for 0° camber

Axle bushing (silver) with a straight hole (0° angle)

Part #: 0021041

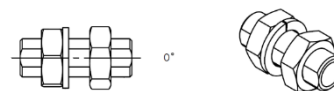
Front view Side view



Axle assembly (0°)

Part #: 9002444

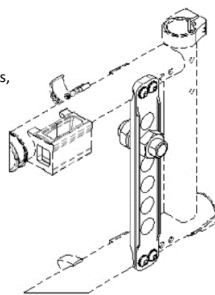
The kit includes axle bushing, nuts, and lock washer.



6 positions non-reversible mounting plate and axle assembly (0°)

Part #: 9001167

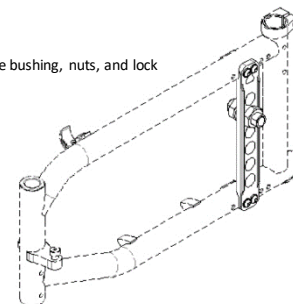
The kit includes mounting plate, axle bushing, nuts, and lock washer.



12 positions reversible mounting plate and axle assembly (0°)

Part #: 9002395

The kit includes mounting plate, axle bushing, nuts, and lock washer.



• Hardware required for 3° camber

Axle bushing (black) with an angled hole of 3°

Part #: 0021042

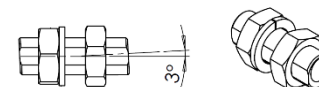
Front view Side view



Axle assembly (3°)

Part #: 9002445

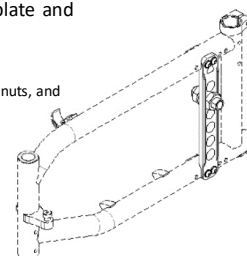
The kit includes axle bushing, nuts, and lock washer.



12 positions reversible mounting plate and axle assembly (3°)

Part #: 9002396

The kit includes mounting plate, axle bushing, nuts, and lock washer.





INFORMATION SHEET

REAR WHEEL CAMBER PARTS AND HARDWARE FOR FOLDING AND RIGID WHEELCHAIR

RIGID WHEELCHAIR CAMBER PARTS AND HARDWARE

Apply to rigid wheelchair models: **APEX A**, **APEX C**, and **APEX P**

- To get a **specific camber angle** on rigid wheelchairs, we use **different axle bushings** with **holes drilled at 0°, 2°, 4°, 6°, or 8°**.
- The **camber angle** is **printed on the axle bushing** (0° camber angle in the example).

Part numbers for axle bushing:

- 0 degree: **0021043**
- 2 degrees: **0021044**
- 4 degrees: **0021045**
- 6 degrees: **0021046**
- 8 degrees: **0021047**

