



# BACK SUPPORTS

USER MANUAL



**IMPORTANT:**

If you have any questions about safety, adjustments, accessories, use, or maintenance, please contact your authorized NXT distributor or dealer.

**INFORMATION:**

**Dealer:** This manual must be given to the user of the product before its first use.

**User:** Prior to using the product, carefully read this manual and keep it for future reference.

**For more information about this product, its parts accessories and the services provided, please visit: [motioncomposites.com](http://motioncomposites.com)**

**NOTE:**

The information contained in this document may be changed without prior notice. The most recent documents, updates, and the latest version of this user manual are available on the website: [motioncomposites.com](http://motioncomposites.com).

**Please record the following for future reference:**

Date of purchase:

Serial Number:

Supplier:

Address:

Telephone:



**CONTACT INFORMATION:**

**Manufacturer**

Motion Composites

160, Armand Majeau Sud

Saint-Roch-de-l'Achigan, Québec

J0K 3H0 Canada

Telephone: 1 866 650-6555

Fax: 1 888 966-6555

[info@motioncomposites.com](mailto:info@motioncomposites.com)

[motioncomposites.com](http://motioncomposites.com)



## TABLE OF CONTENTS

Introduction .....	5
Intended Use .....	5
Symbols and Labels Identification .....	7
Safety Instructions .....	8
Weight Capacity .....	9
Compatibility .....	10
Back Supports Components .....	10
Assembly Instructions .....	13
Cleaning & Care Instructions .....	21
End of Life (disposal, recycling) .....	23
Warranty .....	24
Declaration of Conformity .....	25

## INTRODUCTION

NXT Back Supports are designed to provide effective postural support that maximizes comfort, mobility and function for wheelchair users. They are available in a wide range of models, including options with pelvic or thoracic contouring to accommodate various clinical needs and anatomical shapes. All NXT Back Supports are highly adjustable, offering multiple combinations of width, length, contour, and mounting hardware to suit individual user requirements.

This user manual pertains to the following back supports: Optima, Xtend, Classic, üFIT, üFIT II and Armadillo.

## INTENDED USE

Each model of NXT Back Supports offers a specific level of contour, adjustability and support to accommodate a wide range of user needs. All NXT Back Supports are intended to help maintain alignment, enhance stability and assist users during their daily wheelchair use. NXT back supports are intended for patients who require the use of a manual and/or power wheelchair.

### Optima (standard and DEEP)

The NXT Optima Back Support allows for optimal pelvic positioning while providing maximum support for the user's thoracic region. The Optima offers a wide variety of width and height choices to accommodate numerous user needs, activity levels and body sizes.

### Optima CARBON (standard and DEEP)

The NXT Optima CARBON Back Support is a thoracic back support designed for users whose goal is to keep the total weight of their wheelchair as minimal as possible without sacrificing material strength or performance.

### Xtend (standard and DEEP)

The NXT Xtend Back Support is one of the most uniquely length adjustable back supports on the market today – with an adjustable height range from 16" – 20" (40.64 cm – 50.80 cm) allowing for precise targeted support of the thoracic region.

### Xtend LOW (standard and DEEP)

With an adjustable height range of 13" - 17" (33.0 cm - 43.2 cm), the NXT Xtend LOW Back Support is lower than the standard back. This offers an improved fit for users with shorter stature or users who need lower trunk support without restricting their range of motion of the shoulders and upper extremities.

### Classic (standard and DEEP)

The NXT Classic Back Support is designed to provide stability in the pelvic region for users with good trunk control or to enhance thoracic support.

## üFIT & üFIT II (standard and DEEP) (Not available in USA)

NXT üFit (pelvic back support) and üFit II (thoracic back support) can be customized to uniquely fit users with scoliosis, kyphosis, and other spinal asymmetries requiring pelvic or thoracic support. The main foam support layer is comprised of removable/customizable üCube foam blocks, which can be individually removed and/or cut to create the required fit to accommodate each user's unique needs. A secondary layer of foam ensures the contour is smooth and prevents exposure of the shell.

## Armadillo

The NXT Armadillo Back Support is a multi-adjustable postural back support which features a three-section modular shell with smartGEL Infused Visco Technology foam cushion. The Armadillo is designed to fit the unique contour of the user's spine, to accommodate kyphosis and/or other unique spinal positioning needs.

Different mounting hardware options are available to meet various needs and applications.

## QuickFit

The QuickFit mounting hardware is designed to allow the Back Support to be easily removed without the use of tools. It also offers the greatest range of adjustability.

## 2 Point Micro Mount

The 2 Point Micro Mount hardware is lightweight and takes up minimal space on the canes, making it ideal when space is limited.

## 2 Point Mount

The 2 Point Mount hardware is fixed on the wheelchair. It is lighter and smaller than the QuickFit but offers less adjustability.

## 4 Point Mount

The 4 Point Mount hardware is designed to increase the weight capacity of the Optima Back Supports, supporting users up to 550 lbs (249 kg).

## SYMBOLS AND LABELS IDENTIFICATION

### LABEL 1

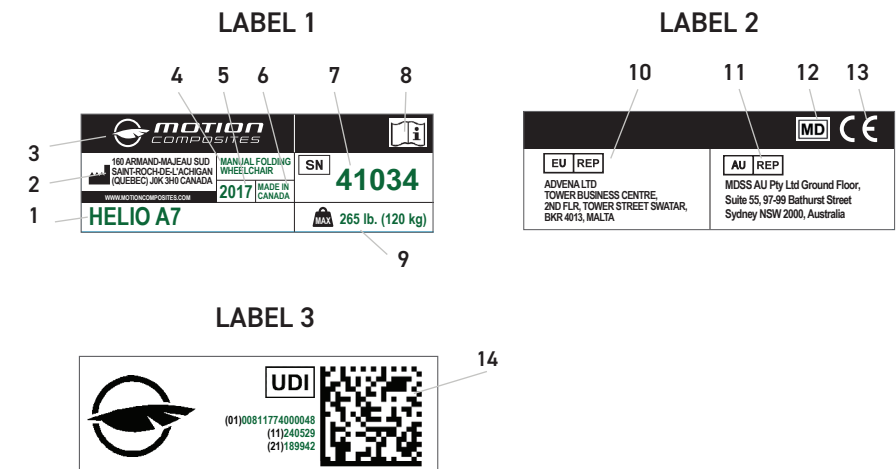
1. Product name
2. Manufacturer address
3. Manufacturer logo & name
4. Product category
5. Year of manufacturing
6. Country of origin
7. Serial number
8. Read the manual before use symbol
9. Weight capacity limit

### LABEL 2

10. Identification of the authorized representative in the European Community
11. Identification of the authorized representative in the Australian Community
12. Medical device symbol
13. Conformity with EU requirements symbol

### LABEL 3

14. UDI (Unique Device Identifier)



This symbol is used throughout this manual. Please familiarise yourself with its meaning.

## WARNING

Indicates a potentially hazardous condition/situation. Failure to follow designated procedures can cause either personal injury, component damage, or malfunction.

## SAFETY INSTRUCTIONS

### 1. SHIPPING DAMAGE

Check all parts for shipping damage (e.g. fabric tears, water damage, broken components, etc.). If anything is damaged, do not use the product. Contact the carrier or dealer for further instructions.

### 2. USER MANUAL

Do not use this product or any other equipment included without reading these instructions. If you do not understand the instructions, contact a healthcare professional, dealer or technical personnel before attempting to use the equipment - otherwise, injury or damage may occur.

### 3. ACCESSORIES WARNING

NXT Seating products are specifically designed and manufactured for use in conjunction with NXT Accessories. Accessories designed by other manufacturers have not been tested by this manufacturer and are not recommended for use with this product.

### 4. INSTALLATION WARNING

Following any adjustments, repair or service, make sure that all attached components are secure before use. Ensure the back support is properly secured to the wheelchair before use. Otherwise, injury or damage may occur.

### 5. FIRST SET-UP

The first set-up of the back support onto the wheelchair shall be performed by a qualified person to ensure proper installation and safe use.

### 6. CENTER OF GRAVITY

Installing a new back support on a wheelchair may affect its center of gravity and could cause the wheelchair to become unstable, potentially resulting in injury. Always assess whether anti-tippers or other

stability aids are needed to ensure the wheelchair remains safe during use.

### 7. SKIN

Skin condition should be checked regularly after the installation of any new seating system. If any redness or reaction associated with the use of the back support persists for more than 30 minutes, stop using it and contact your therapist or doctor immediately.

### 8. PRODUCT'S CHOICE

It is recommended that a clinician experienced in seating and positioning be consulted to determine if the back support is appropriate.

Your therapist and physician should be consulted if you have any questions regarding individual limitations and needs. Working with your therapist, physician, and equipment supplier is the best way to ensure that a seating choice matches your individual needs.

### 9. ENVIRONMENT

Avoid touching extremely hot or cold surfaces, as this may cause skin injury. If the back support has been exposed to extreme low or high temperatures, allow it to reach room temperature before use. To prevent damage or the risk of injury, keep the product away from sharp objects, excessive heat, and open flames.

It is important to keep the back support dry to reduce the risk of corrosion, mold, or material degradation. If the product becomes damp or wet, wipe it thoroughly with a dry cloth and allow it to dry completely as soon as possible.

### 10. USAGE

If you are unable to achieve sufficient skin protection, postural control, and/or are unable to tolerate the product for any reason, consult your dealer or healthcare professional about alternative options.

### 11. CORRECTIVE MAINTENANCE

DO NOT continue using this product if you experience issues affecting performance, comfort or safety. Corrective maintenance can be performed by or arranged through your equipment supplier.

### 12. MODIFICATIONS

Unauthorized modifications are prohibited for safety and functionality of the device. All modifications shall be completed by a certified and approved professional.

### 13. MISUSE

All back supports are designed solely for use during normal wheelchair activities. Any use other than the one described in this user manual is prohibited.

### 14. COVER

Never use the back support without its cover. The cover helps protect both the user and the product. Using it without the cover may increase the risk of skin damage, reduce the product durability, and make it more susceptible to flammability.

### 15. USE

Do not use the back support in direct contact with open wounds or advanced-stage pressure injuries without the advice of a healthcare professional.

The back support must not be used by individuals with a known allergy to any of the materials in the device.

### 16. TRANSPORT

The user should always transfer to the motor vehicle seat and use the vehicle's installed restraint system during transport. The use of NXT back supports on any wheelchair in a moving vehicle is not recommended, as it could result in injury.

## WEIGHT CAPACITY

Back Support Models	Sizes	Weight Capacity
All models	Up to 20 in (50.8 cm)	300 lbs (136 kg)
All models	21 in – 22 in (53.3 cm – 55.9 cm)	400 lbs (181 kg)
Optima Optima DEEP	23 in and larger (58.4 cm)	550 lbs (249 kg) * With 4 Point Mount Hardware

### WARNING

**Never exceed the maximum weight capacity of the device. Exceeding the maximum weight capacity may cause device failure and result in serious injury. The weight capacity includes the user's body weight and any additional load. When using accessories together with the wheelchair or other devices, always follow the lower applicable weight limit.**

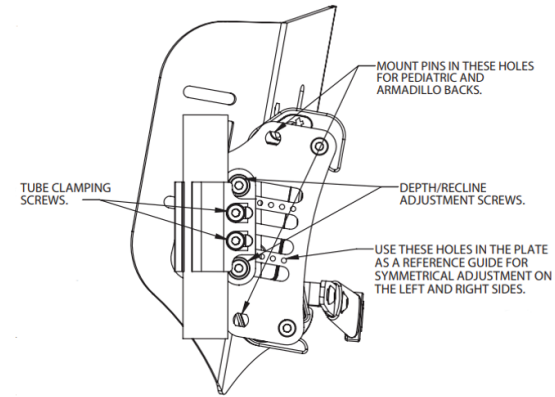
## COMPATIBILITY

All the mounting hardware clamps fit multiple sizes of back cane tubing from 0.75-1" (1.9-2.5 cm) without the need of shims.

All NXT Back Supports can be installed on most manual and power wheelchairs equipped with rigid back canes.

### Compatibility Notice

To ensure safe and proper use, the compatibility of any device with a NXT Back Support must be confirmed directly with the third-party device manufacturer. Motion Composites cannot verify or guarantee the compatibility, performance, or safety of devices manufactured by third parties when used in combination with NXT products.



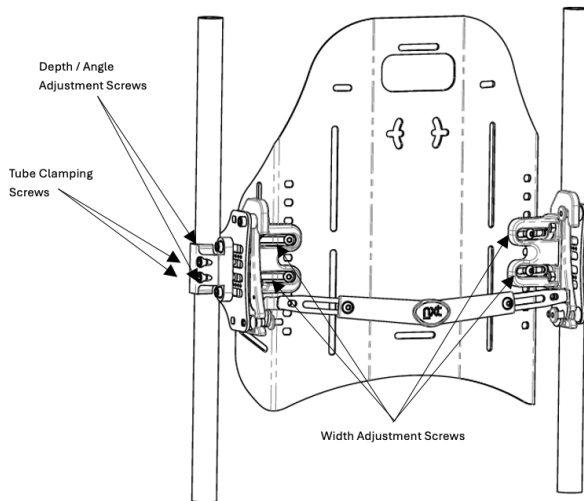
## BACK SUPPORTS COMPONENTS

### ⚠ WARNING

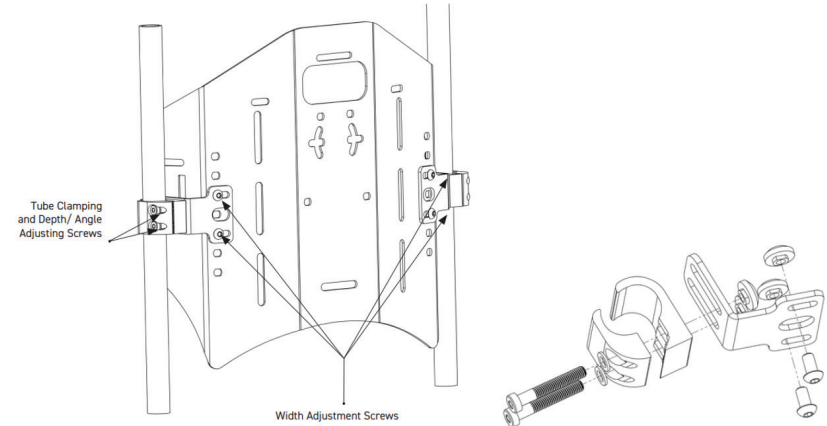
DO NOT substitute hardware provided. Use only high strength hardware provided.

All Back Supports are made from a shell, foam, a cover (standard or incontinent/infection control) and a mounting hardware. The standard mounting hardware is the QuickFit, but other options are the 2 Point Micro Mount, the 2 Point Mount, the 4 Point Mount and the Amy Systems 4 Point Mount.

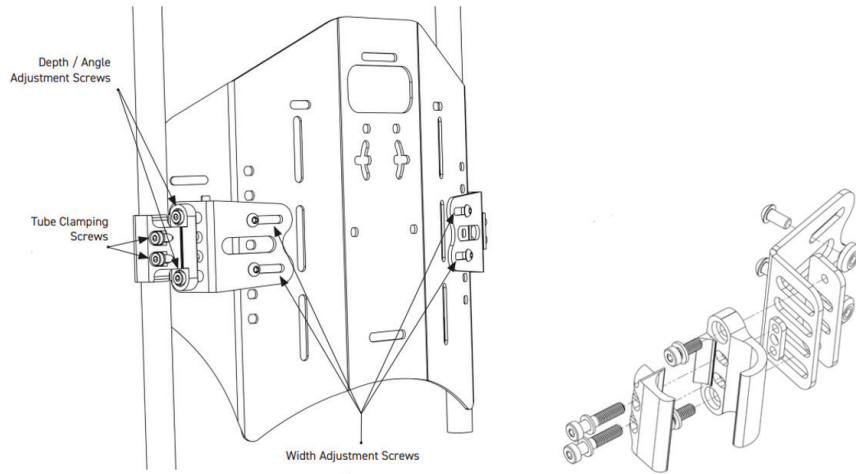
### QuickFit Mounting Hardware



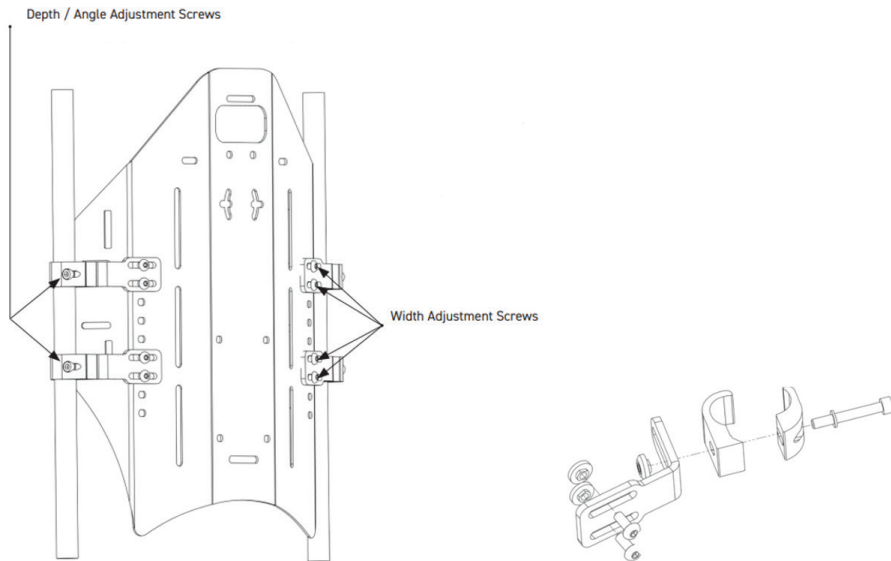
### 2 Point Micro Mount Hardware (0014734)



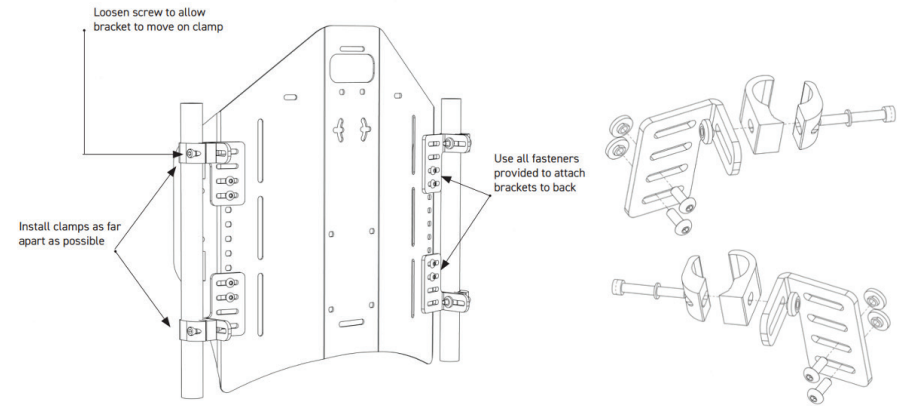
## 2 Point Mount Hardware (0014371)



## 4 Point Mount Hardware (0014741)



## Amy Systems 4 Point Mount Hardware (0015740)



## ASSEMBLY INSTRUCTIONS

Tool required: 2.5mm, 4mm & 5mm Allen keys and a torque wrench with 4 mm and 5 mm Allen sockets.

### Recommended torque settings:

- Screws with 4 mm Allen key: 7 Nm
- Screws with 5 mm Allen key: 12 Nm

### **⚠ WARNING**

Install the back support without the user in the wheelchair. Once installation is complete, the user can be seated to evaluate whether any adjustments are needed.

### **⚠ WARNING**

Ensure that all hardware is well tightened, the back support is properly installed and that the latches are locked before using it.

### Compatibility Validation

Prior to installation, check the diameter of the back canes as well as the distance between them. For compatibility, the back cane diameter must be between 0.75" and 1". The wheelchair width must be equal to, or up to 2" wider than, the back support width.

## QuickFit Mounting Hardware

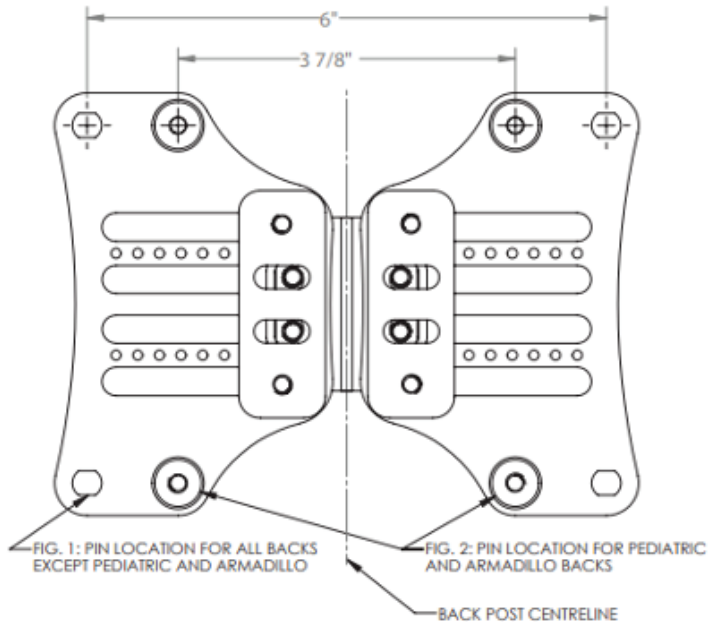
### QuickFit Mounting Hardware Position

The QuickFit Mounting Hardware are pre-assembled with the cane clamp in the most rearward mounting position to maximize seat depth of the wheelchair. The configuration can be changed by orientating the QuickFit cane clamp forward.

### Change in forward position

1. Remove the cane clamp from the mounting plate using a 5mm Allen key.
2. Rotate the cane clamp 180° and re-attach it to the mounting plate.
3. Once properly positioned, tighten the depth/recline screws to a torque of 12 Nm.

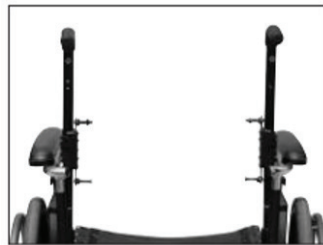
Note that the QuickFit Mounting Hardware provides 2.5 in / 6.4 cm of depth adjustment.



## Installation

### Clamp on the back canes

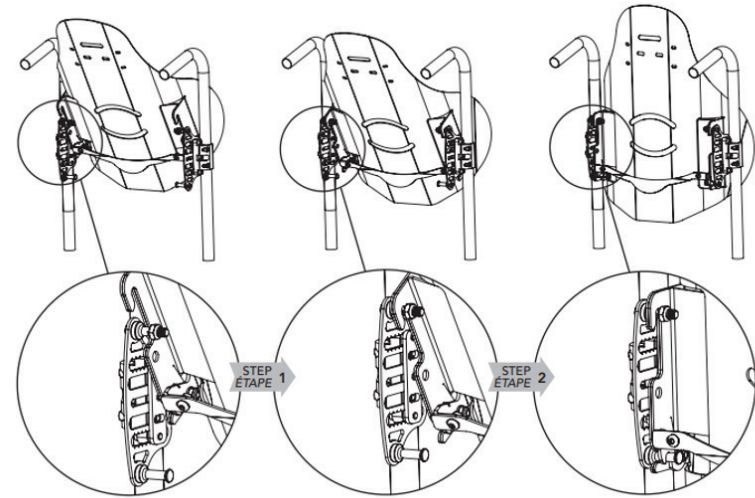
1. Remove the wheelchair back upholstery if applicable.
2. Establish the desired mounting plate configuration for the user (Rear or Forward mounting position)
3. Loosen the 2 tube clamping screws with a 5 mm Allen key and mount the QuickFit bracket on the back canes.



4. Position the cane clamp at the desired height and tighten the tube clamping screws enough to hold it in place. Ensure that the longer post is positioned at the bottom, closer to the seat.
5. Measure the height of the QuickFit clamp assembly from a fixed position on the wheelchair and install both mounting plates at the same desired height.
6. Make sure the clamp mounting plates are mounted parallel with each other.

### Backrest on the mounting plates

7. Insert the top of the backrest slot onto the top adjustment pins.
8. Rotate the lower section of the backrest rearward to lock it into the locking latches to secure the backrest in place.
9. Ensure that the latches lock completely by pushing down on the release handle or latches if necessary.



### Final adjustment

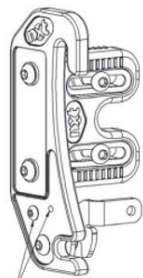
10. To ensure the backrest is properly fitted, you may need to adjust the mounting hardware to match the back cane width. Refer to the Width Adjustment section below.
11. If any width adjustment is made, make sure to also adjust the release handle.
12. Make sure that the overall fit and alignment of the back is correct and if not, adjust as needed.
13. Secure the cane clamping screws onto each back cane to a torque of 12 Nm.

## Locking the latch

### To prevent the latch from lifting:

1. Unscrew the locking screw using a 2.5 mm Allen key.
2. Move the screw to the adjacent hole, as shown in the figure below.
3. Retighten the screw.

\* The hole to lock the latch is not threaded, but the screw will make its own thread.



## Removing the back support

### To remove the back support from the wheelchair:

1. Lift the one hand release lever to release the latches and push the bottom of the back forward.
2. Lift the back support off the upper pins to remove it completely.



## 2 POINT MICRO MOUNT HARDWARE, 2 POINT MOUNT HARDWARE, 4 POINT MOUNT HARDWARE AND AMY SYSTEMS 4 POINT MOUNT HARDWARE

### Installation

1. With the 4 mm Allen Key, install the mounts onto the back shell at the desired height (with the Width Adjustment Screws), ensuring both sides are aligned at the same level.)
2. Determine the desired position of the clamping hardware on the back canes to mount the back support at the optimal height.
3. Using the 5 mm Allen Key, loosen the Depth / Angle Adjustment Screws, place and tighten the clamps onto the wheelchair back canes. Use a 4 mm Allen key for the 2 Point Micro Mount Hardware.
4. Make sure the back is centered between the back canes and that its position and configuration is optimal for the user.
5. Once the back support is placed in the desired position, ensure all fasteners are securely tightened. Torque the Width Adjustment Screws to 7 Nm with the 4 mm Allen key and the Depth / Angle Adjusting Screws to 12 Nm with the 5 mm Allen key (7 Nm for the 2 Point Micro Mount Hardware).

## Mounting Hardware Adjustment (for all mounting hardware)

All adjustments can be made with the user seated in the wheelchair to achieve the most optimal fit. Ensure the user is not fully resting against the back support until all fasteners are tightened to the required torque.

\* The 2 Point Micro Mount Hardware Depth/Angle and Height Adjustments need to be done with a 4 mm Allen key instead of a 5 mm Allen key as described in the section below. Tighten these screws to a torque of 7 Nm instead of 12 Nm.

### Depth/Angle Adjustment

1. Loosen the Depth/Angle Adjustment Screws on the mounting hardware with a 5 mm Allen key.
2. Adjust the back support to the desired depth and angle by sliding it front-to-back or tilting it diagonally. For QuickFit Mounting brackets, use the round holes on the mounting plates as visual reference.
3. Ensure both sides are adjusted equally by checking the angle and position of the clamp on the bracket.
4. Retighten all screws to a torque of 12 Nm.

### Height Adjustment

The height of the back support can be adjusted by sliding it along the back canes or by repositioning the mounting hardware on the back shell.

### On the back canes

1. Using a 5 mm Allen key, loosen the Tube Clamping Screws on the mounting hardware.
2. Adjust the back support by sliding it up or down to the desired height.
3. Ensure the screws are properly aligned with the back support mounting holes, and that both sides are set to the same height.
4. Retighten all screws to a torque of 12 Nm.

### On the back support shell

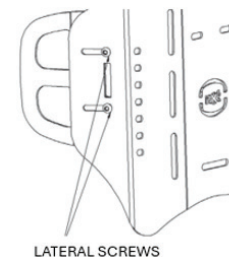
1. Using a 4 mm Allen key, remove the Width Adjustment Screws from the mounting hardware.
2. Reposition the mounting hardware to the desired location on the back support, ensuring that the hardware holes align with the holes on the back support shell.
3. Reinstall all screws and tighten them to a torque of 7 Nm.

### Width Adjustment

1. Using a 4 mm Allen key, loosen the Width Adjustment Screws on the mounting hardware.
2. Slide the mounting hardware horizontally to match the width of the wheelchair's back canes.
3. Center the back support between the canes and ensure all screws are aligned in identical position within the hardware slots.
4. Retighten all screws to a torque of 7 Nm.

## Lateral Contour Adjustment (DEEP)

1. Loosen the Lateral Screws with a 4 mm Allen key.
2. Slide the lateral contour to adjust its depth.
3. Once in the desired position, retighten the screws to a torque of 7 Nm.



## Xtend Adjustment

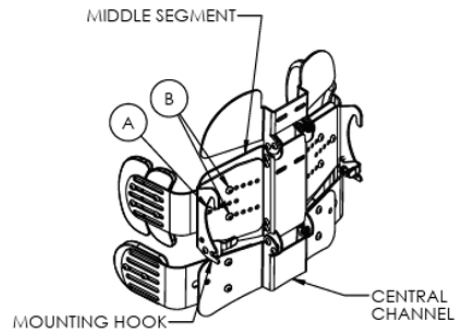
All Xtend back supports can be adjusted from 16"/40.6 cm to 20"/50.8 cm and all Xtend LOW back supports from 13"/33 cm to 17"/43 cm.

1. Loosen the four cap screws with a 4 mm Allen key on the rear of the back support.
2. Set the back support to the desired height.
3. Once the back support is in the desired position, tighten the lock nuts to a torque of 7 Nm.

When the Xtend is in its lowest position, tuck the excess padding behind the seat cushion.

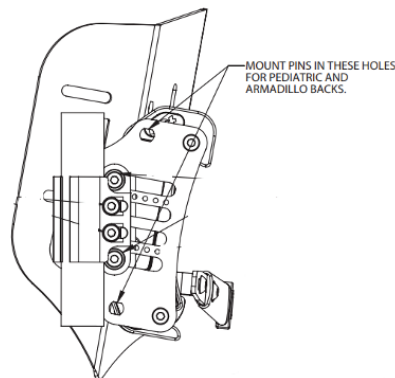


## Armadillo Adjustment



## Changing the pins' location on the QuickFit mounting plate

For the Armadillo, the pins' locations on the QuickFit mounting plate should be in the holes as shown in the picture below.



## To change their location

1. Unscrew them completely with a 5 mm Allen key.
2. Move them to the other holes.
3. Retighten all pins to a torque of 12 Nm.

## Setting back height and angle

The Armadillo back supports can be installed on wheelchairs like any other back supports, using standard clamps attached to the back canes.

The back height and angle of the middle segment can be adjusted with the tube clamping screws, just like all back supports.

## Adjusting back to match chair width

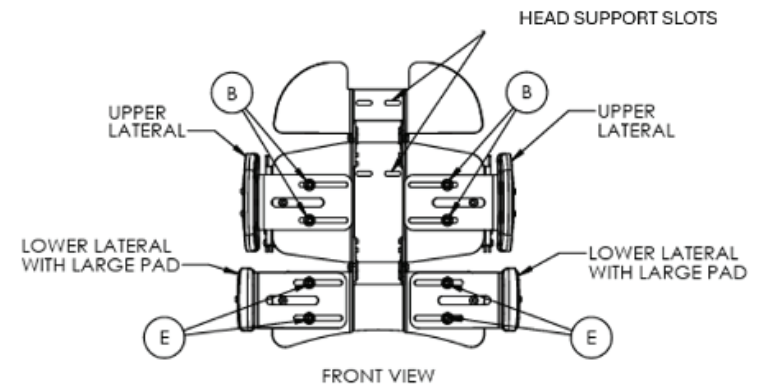
The Armadillo is available in sizes to fit chair widths of 14"/35cm to 25"/63cm.

1. To adjust the mounting hook width, loosen screws A and B with a 4 mm Allen key.
2. Slide the mounting hooks to the desired width and tighten all screws to a torque of 7 Nm.

\* Screw A fits into a fixed threaded hole in the middle shell segment and screws B fit into sliding nuts which also hold the upper laterals in place if installed.

\*\* The hooks are adjustable between the minimum and maximum width and are typically placed symmetrically on the back, however, they can be adjusted asymmetrically if required.

## Head rest installation



The Upper and Middle segments of the Armadillo shell have slots to fit the mounting hardware for the NXT MultiFit Head Support. You can choose the location which provides the best positioning for the head support.

## Lateral installation and adjustment

The upper laterals are secured using screws B, and the lower laterals are secured with screws E. These screws thread into sliding nuts, enabling continuous adjustment of the lateral supports between their innermost and outermost positions.

Adjustment is only limited by the user's postural needs and any structural elements of the wheelchair.

Loosening screws B or E allows the laterals to slide for positioning, without altering the position of the mounting hooks.

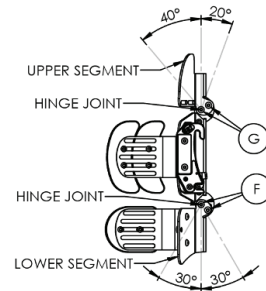
### To add a lateral support

1. With a 4 mm Allen key, remove screws B (for upper laterals) or screws E (for lower laterals).
2. Position the laterals beneath the mounting plate.
3. Reinstall screws B or E and tighten them to a torque of 7 Nm.

### Angle adjustments

#### Adjustment of the upper segment:

1. With a 4 mm Allen key, loosen screws G on both sides of the hinge joint.
2. Tilt the upper segment:
  - Forward up to 40°
  - Backward up to 20°
3. Tighten the screws G after adjustment to a torque of 7 Nm.



#### Adjustment of the lower segment

1. With a 4 mm Allen key, loosen screws F on both sides of the hinge joint.
2. Tilt the lower segment:
  - Forward or backward up to 30°
3. Tighten the screws G after adjustment to a torque of 7 Nm.

### **⚠** WARNING

Ensure all 8 screws (F and G) are securely tightened before use.

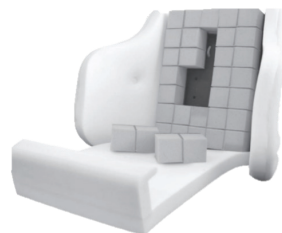
### üFit adjustment

The üCube sets can be removed or cut for a greater customization of the back support.

### Customization

#### To access the üCube layer:

1. Unzip both zippers on the cover.
2. Fold down the front of the cover.
3. Remove the center foam overlay to expose the üCube sets.



#### To remove the üCube set:

1. Firmly grasp the bottom of the darker-colored closed-cell foam as close as possible to where it meets the shell, to prevent tearing.
2. Gently pull upward – the cube will release from the back shell.

### To cut üCube:

1. Remove the cube as described above.
2. Make the necessary cuts to the üCube.
3. Reinstall the cube by:
  - a. Aligning the white pins (studs) on the underside of the üCube with the holes in the back shell.
  - b. Press firmly until you hear an audible click.

### After customization:

1. Reinstall the center foam overlay.
2. Zip up the cover securely.

### Head rest installation

To install a head support on a üFit back support, the cover fabric must be modified to expose access to the mounting area.

1. Locate the square punched template on the back cover – this indicates where the head support mounts.
2. Use scissors to carefully remove the rectangular section of fabric covering the slots.
3. To access the internal mounting area, remove the back cover completely.
4. Remove the üCube sets in the area covering the mounting slots.
5. Install the mounting bracket in the exposed slots, following the instructions for the headrest mounting.
6. Adjust the angle by rotating the bracket slightly – clockwise or counterclockwise, depending on the desired orientation.
7. Reinstall the üCube sets around the headrest mounting bracket.
8. Reattach the back cover, making sure the hardware fits correctly through the square punched cut.



## CLEANING & CARE INSTRUCTIONS

### Maintenance schedule

The back support (hardware, shell, foam and covers) should be inspected monthly for any functional and visual defect or material degradation.

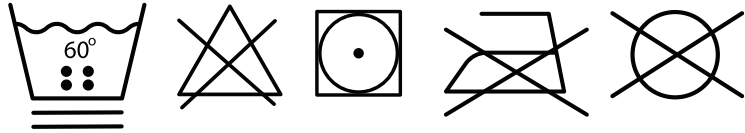
The covers and shell should be washed monthly or as needed, following the cleaning instructions below.

Check the back support periodically to ensure there is no buildup of dirt or debris

in any mechanism, moving parts, or crevices, as this may affect its performance and longevity.

All fasteners should be inspected every 6 months for signs of wear, looseness, or damage. They should be tightened according to the torque specifications provided in this manual.

## Cleaning



Symbols	Definition
	Machine wash warm, gentle cycle (maximum washing temperature of 60 °C / 140 °F)
	Do not bleach
	Tumble dry, low heat (maximum temperature of 60 °C / 140 °F)
	Do not iron
	Do not dry clean

## Smartx3D Cover

- Remove the cover from the foam base.
- Close the zipper.
- Machine wash in warm water (60 °C / 140 °F) with regular detergent on a gentle cycle.
- Air dry or tumble dry on low heat.
- Do not iron. Do not dry clean. Do not bleach.

## Incontinence/Infection Control Cover

- Wipe clean with a damp cloth.

### For laundering:

- Remove the cover from the foam base.
- Close the zipper.
- Machine wash in warm water (60 °C / 140 °F) with regular detergent on a gentle cycle.
- Air dry or tumble dry on low heat.
- Do not iron. Do not dry clean. Do not bleach.

## Foam

Keep the foam dry at all times. If the cushion gets wet, allow the foam to air dry completely before putting the covers back on. Do not use a machine dryer or apply direct heat.

Regularly check the appearance and smell of the foam to make sure it is still in good condition (color, thickness, consistency).

## Shell

The back support shell can be cleaned using soap and water or a disinfecting wipe. After cleaning, dry the shell completely - air dry or dry with a cloth.

## REPLACEMENT PARTS

Consult our website to download the parts manual and view ordering information.

### Please contact us at:

MOTION COMPOSITES  
160 Armand Majeau, sud, St-Roch-de-l'Achigan  
Québec, Canada J0K 3H0

Telephone: 1 866 650-6555  
Fax: 1 888 966-6555

info@motioncomposites.com  
motioncomposites.com

## END OF LIFE (DISPOSAL, RECYCLING)

To ensure environmentally responsible disposal, please consider donating it to a local charity or recycling center. If the back support is damaged or unusable, check with local waste management services for proper disposal guidelines.

## WARRANTY

### Limited Warranty – Back Support

This warranty is limited to the first user and is not transferable and provides specific legal rights, which may vary by jurisdiction.

### Warranty Coverage

The **NXT® Back Support** is warranted to be free from defects in **materials and workmanship** under normal use for a period of **twenty-four (24) months** from the date of delivery.

**Notwithstanding the exclusions below**, this warranty provides for **repair or full replacement** if:

- It has a warranty that provides for repair **or**
- full replacement if manufacturing defects are identified or the surface does not remain intact due **to normal wear within 18 months**.

### Exclusions

**This warranty does not cover:**

- Normal cosmetic wear and tear
- Damage caused by misuse, abuse, neglect, accident, or improper installation
- Failure to follow care and maintenance instructions
- Unauthorized modification, alteration, or adaptation
- Use with non-approved components or outside the intended clinical use

**Cover-specific exclusions include:**

- Cigarette burns
- Tears caused by sharp objects
- Damage resulting from improper washing or care

### Warranty Remedy

If a defect covered by this warranty is confirmed within the warranty period, the manufacturer will, at its discretion, **repair or replace** the defective component using new or refurbished parts.

Labor, installation, and shipping costs are **not included**.

Warranty coverage for repaired or replaced products ends at the conclusion of the original warranty period.

### Warranty Claims

All warranty claims must be initiated through the **authorized dealer** from whom the product was purchased. Proof of purchase may be required prior to processing.

## DECLARATION OF CONFORMITY

### Manufacturer

MOTION COMPOSITES

160 Armand Majeau, sud, St-Roch-de-l'Achigan  
Québec, Canada J0K 3H0

Telephone: 1 866 650-6555

Fax: 1 888 966-6555

info@motioncomposites.com

motioncomposites.com

### European Authorized Representative

ADVENA LTD.

Tower Business Centre, 2<sup>nd</sup> Flr.

Tower Street, Swatar, BKR 4013, Malta

We hereby declare that the below mentioned devices have been classified according to the classification rules and conform to the Essential Principles of Safety and Performance as laid out in the Health Products (Medical Devices) Regulation (EU) 2017/745.

### Medical devices

NXT Back Supports and mounting hardware.

### Manufacturing site

Motion Composites Inc.

160, Armand-Majeau Sud, Saint-Roch-de-l'Achigan  
Quebec, Canada J0K 3H0

### Risk classification

Class I Medical Device: Regulation: (EU) 2017/745.

### Standards applied

This device has been designed and manufactured in accordance with the requirements of Regulation (EU) 2017/745 on medical devices and the following harmonized standards:

- California Technical Bulletin 117
- ISO 10993-1 Biological evaluation of medical devices - Part 1
- ISO 15223-1 Symbols for medical device labels, labeling and information to be supplied
- ISO 14971: Application of risk management to medical devices
- ISO 16840-3: Wheelchair seating - part 3.



**Note to users:**

INCIDENT REPORTING: Any serious incident that has occurred in relation to the device should be reported to the manufacturer and the competent authority of the Member State in which the user and/or patient is established.



NXT SEATING is a brand of



Motion Composites  
160, Armand Majeau Sud  
Saint-Roch-de-l'Achigan, Québec  
J0K 3H0 Canada

Telephone: 1 866 650-6555  
Fax: 1 888 966-6555  
[info@motioncomposites.com](mailto:info@motioncomposites.com)  
[motioncomposites.com](http://motioncomposites.com)



Advena Limited | Tower Business Centre, 2<sup>nd</sup> Flr., Tower Street Swatar, BKR 4013 Malta